

2024

PRODUCT GUIDE

- Liquid Handling
- Purification
- Extraction
- Services

TABLE OF CONTENTS

ABOUT GILSON

● About Us	2
● Expertise for Your Applications	4
● Service Experts Ready to Help	6
● Services & Support	7
● OEM Capabilities	8

LIQUID HANDLING

● Pipette Selection Guide	10
● Pipette Families	11
● TRACKMAN® Connected	12
● PIPETMAN® M Connected	14
● PIPETMAN® M	16
● MyPIPETMAN® Enterprise	18
● MyPIPETMAN Select	20
● PIPETMAN® L	22
● PIPETMAN® L Fixed	24
● PIPETMAN®	26
● Pipette Accessories	28
● PIPETMAN® DIAMOND Tips	30
● PIPETMAN® EXPERT Tips	34
● AmpliPur® Expert Tips	36
● MICROMAN® E	38
● DISTRIMAN®	40
● REPET-TIPS	41
● MACROMAN®	42
● Serological Pipettes	43
● PLATEMASTER®	44
● PIPETMAX®	45

BENCHTOP INSTRUMENTS

● Safe Aspiration Station & Kit	48
● DISPENSMAN®	49
● TRACKMAN®	50
● Roto-Mini Plus	50
● Digital Dry Bath Series	51
● Mini Vortex Mixer	51
● Vortex Mixer	52
● Digital Mini Incubator	53

CENTRIFUGES

● CENTRY™ 103 Minicentrifuge	54
● CENTRY™ 117 Microcentrifuge	55
● CENTRY™ 101 Plate Centrifuge	55

PERISTALTIC PUMP

● MINIPULS® 3 Pump & MINIPULS Tubing	56
--------------------------------------	----

FRACTION COLLECTORS

● Fraction Collector FC 203B	58
● Fraction Collector FC 204	58

AUTOMATED LIQUID HANDLERS

● Liquid Handler Overview/Selection Guide	60
● GX-271 Liquid Handler	61

LOADING SYSTEMS

● Loading System Overview/Selection Guide	62
● VERITY® 4120	63
● Racks	64
● Accessories Overview/Selection Guide	65

PURIFICATION

● Scaling Up Your Purification System	66
● HPLC Overview/Selection Guide	66
● CPC Overview/Selection Guide	69

PUMPS

● Pump Overview/Selection Guide	70
● VERITY® 3011	71
● VERITY® 3240	72

DETECTORS

● Detectors Overview/Selection Guide	72
--------------------------------------	----

PEPTIDE AND OLIGONUCLEOTIDE PURIFICATION SYSTEMS

● Peptide Purification	74
● Oligonucleotide Purification	75

LC PURIFICATION SYSTEMS

● PLC Systems	76
● VERITY® CPC Lab MS	77
● VERITY® SKID LC	78
● Purification Service Overview	79

EXTRACTION

● Automated Extraction Overview/Selection Guide	80
● ASPEC® PPM	82
● ASPEC® 274 System	83
● ASPEC® SPE Cartridges	84
● VERITY® GPC Cleanup System	86
● EXTRACTMAN®	87
● Gilson SupaTop™ Syringe Filters	88

Gilson's Interactive Guide

This version of Gilson's product guide includes interactive links to documents, articles, and other resources that allow you to learn more about our technology and solutions. On each relevant product page, simply click on the icons to access relevant documentation or resources. Visit gilson.com to access any of the relevant links throughout this guide.



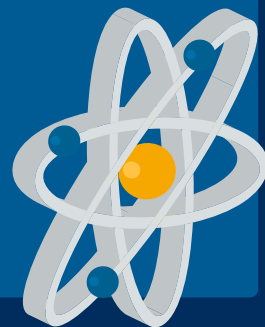
ABOUT US

Gilson is a family-owned global manufacturer of sample management and purification solutions for the life sciences industry. We help researchers advance the pace of discovery by creating easy-to-use lab devices that improve reproducibility and traceability. Since 1957, we've been developing innovative products, such as the first continuously adjustable-volume pipette, PIPETMAN®. By partnering closely with the scientific community, we have advanced our portfolio offerings, adding automated pipetting systems and chromatography instruments, plus intuitive software management capabilities. Backed by worldwide R&D, service, and support, Gilson strives to enable verifiable science and to make lab life easier for our customer



Our Vision

Enabling verifiable science and making lab life easier for researchers.



Our Mission

To partner with the scientific community and help researchers advance the pace of discovery by creating instruments and services that improve their results.



CORPORATE RESPONSIBILITY

Gilson has been around for 75 years and counting, and sustainability is in our genes. Our involvement in protecting the environment extends to our financial resources, operations, employees, suppliers, customers, and the communities we live and work in daily.

From carefully designing our products to be greener, to protecting our environment through small changes in our daily work, you can be sure that sustainability is at the core of what we do. We are proud to have been awarded the EcoVadis Silver Award for Excellence in Environmental Responsibility, Social Laws, Business Ethics, and Supply Chain Management. We also maintain a number of initiatives that help us to give back to the amazing scientists in the field and support access to science for all.

[LEARN MORE](#)

A GLOBAL PRESENCE

We have an integrated network all over the world, along with a team of distributors to support you.



- Product Organization (PO)
- Market Organization (MO)
- Gilson Distributor



EXPERTISE FOR YOUR APPLICATIONS

For decades, we've been helping researchers advance the pace of discovery by creating easy-to-use, application-oriented lab tools that improve reproducibility and traceability. No matter your application, we have resources, products, and solutions to help make your lab life easier.

Molecular Biology

Molecular Biology is the study of how molecules interact with one another in living organisms to perform the functions of life. Mostly focusing on genes and proteins, molecular biologists use techniques like the polymerase chain reaction (PCR) to amplify DNA for various applications such as cloning, gene expression analysis (RT-PCR, RT-qPCR), Next Generation Sequencing (NGS), and more.

[LEARN MORE](#)



Natural Products

Natural products can be both chemically synthesized or isolated from natural sources such as plant and tissue extracts, fermentation broths, etc. Active agents from natural sources are typically found in very low levels and must be extracted and purified to higher concentrations to demonstrate their specific activity. We offer a range of extraction and purification resources and products to benefit your natural products workflows.

[LEARN MORE](#)




Proteomics

Proteomics is the study of proteins in living systems. They carry out a variety of functions such as generating an immune response to foreign bodies, catalysis of biochemical reactions, movement, structural support, and cell signaling to name a few. Our range of instruments help aid in the purification and characterization of proteins from simple low-pressure systems to mass-directed purification.

[LEARN MORE](#)



 For more application-specific content, resources, and products, explore our applications center on [gilson.com](https://www.gilson.com).

Environment & Food Safety

As we find new ways to grow food, clean our water supply, and identify new pathogens, it is increasingly important to make sure your application is accurate and optimized to ensure quality, nutritious food and a safe environment for us to live in. From analyzing pesticides on crops to identifying perfluorinated compounds (PFCs) in water, your food safety and environmental applications can benefit from our range of extraction and liquid handling solutions.

[LEARN MORE](#)



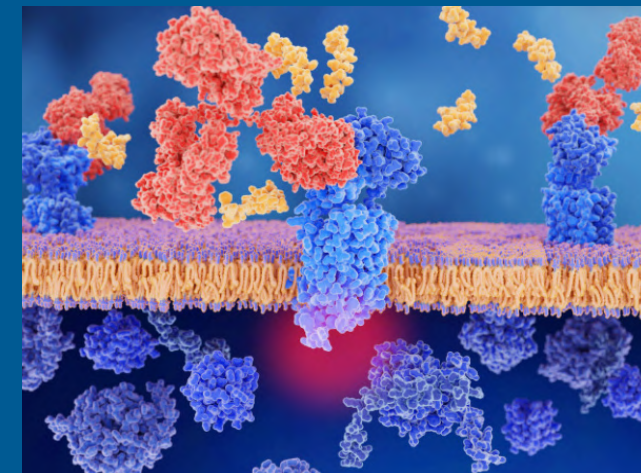
Forensic Toxicology

Forensic toxicology is part of the science of pharmacology, and is defined as the analysis of biological samples for the presence of drugs and metabolites or biomarkers. This also includes studying the adverse effects of drugs and chemicals on living organisms. Robust instrumentation, a flexible software interface that meets the needs of the scientist, reproducible methods, and traceability are all needed in regulated environments.

[LEARN MORE](#)



FEATURED APPLICATIONS CONTENT



VERITY® 271 LCMS System: Mass-based Peptide Purification

Preparative LC coupled with mass spectrometry (MS) is a well-established method for purifying target compounds. In this tech note, we demonstrate the use of a VERITY 271 LCMS system to perform mass-based purification of target peptides from a mixture. The system is controlled using TRILUTION® LC Software, which provides real-time and post-run MS and UV data.

[LEARN MORE](#)



PIPETMAX®: Automated Liquid Handling for Reliable qPCR Experiments

The quantitative polymerase chain reaction (qPCR) has transformed the world of molecular biology methodology by enabling fast, high-throughput detection and quantification of DNA and RNA in real time. PIPETMAX is specifically designed to maximize reproducibility and accuracy in qPCR workflows. Here, we explore three ways that PIPETMAX can help you run more effective and efficient experiments.

[LEARN MORE](#)

SERVICE EXPERTS READY TO HELP

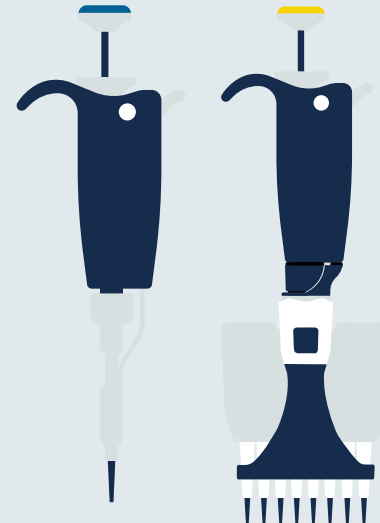
WE'RE HERE TO HELP

We are committed to the highest caliber of quality and complete customer satisfaction with our suite of products and services. This commitment doesn't end with your purchase—it only just begins. We provide custom solutions to help you meet a wide range of laboratory requirements including: service, preventative maintenance, calibration, and general product support. Gilson has dedicated service, support, and training teams worldwide to help you maintain maximum performance of your instruments, make your lab life easier, and ensure reliability of your data.

MANUAL LIQUID HANDLING

Have our Expert Technicians Restore your Pipettes

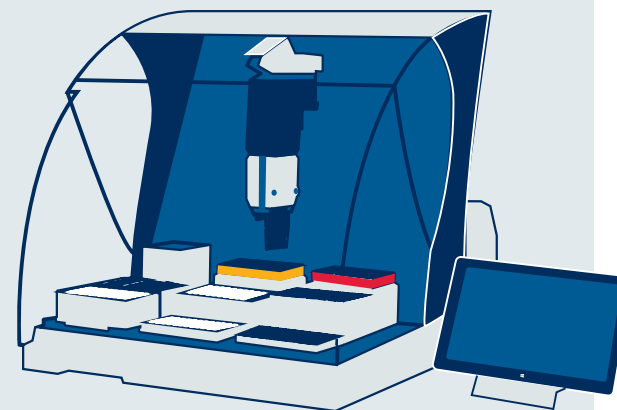
Gilson is the expert on pipettes with over 50 years of experience in the industry. Regular maintenance of your pipettes ensures they operate within specification and deliver reproducible data with the accuracy you need. Regular service also helps minimize downtime in your lab, reduces the likelihood of unplanned, costly repairs, and increases the lifespan of your pipettes. Gilson service technicians are factory trained and use manufacturer parts along with proprietary software, such as Gilson Volumetrics™. Gilson Volumetrics utilizes automatic data transfer from our analytical balances and environmental probes to generate your service documentation with the utmost attention to detail and accuracy of data. Gilson is an ISO 9001-certified company and ISO 17025-accredited service is available throughout the organization.



AUTOMATED LIQUID HANDLING

Avoid Unexpected System Downtime and Assure Accuracy

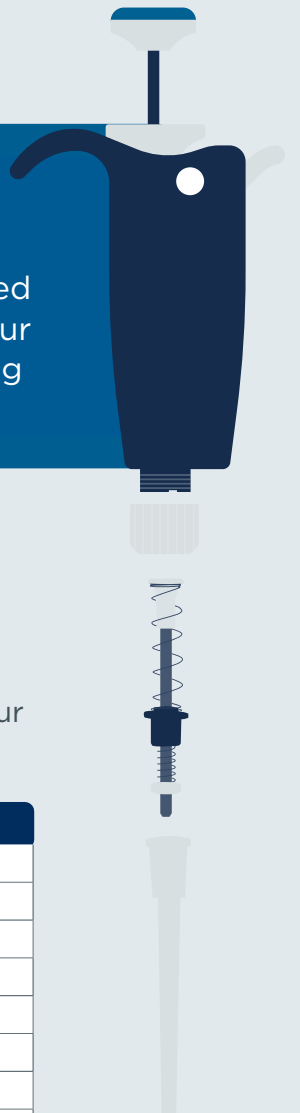
Keep your instruments running like new by signing up for preventative maintenance services. With regularly scheduled preventative maintenance, you'll extend the life of your instruments and save time and money by avoiding unexpected interruptions to your work. Additionally, you can have confidence in the accuracy and reliability of your results because we'll ensure your instruments are operating within original specifications.



SERVICES & SUPPORT

QUALITY PIPETTE SERVICE MADE EASY

Never question the integrity of your samples. Our flexible, tiered service level offerings, along with the option for ISO 17025 accredited service, are tailored to fit your lab's needs. By regularly servicing your pipettes, you can minimize unplanned, costly repairs while increasing the lifespan of your pipettes.



Quality Pipette Service Made Easy

Never question the integrity of your samples. Our flexible, tiered service level offerings, along with the option for ISO 17025 accredited service, are tailored to fit your lab's needs. By regularly servicing your pipettes, you can minimize unplanned, costly repairs while increasing the lifespan of your pipettes.

WHAT'S INCLUDED	LITE	PRO	PREMIUM
Visual & Functional Inspection	●	●	●
Internal & External Cleaning	●	●	●
Leak Test	●	●	●
Gravimetric Check	●	●	●
Preventative Maintenance	●	●	●
Re-grease As Needed	●	●	●
Pipette Label	●	●	●
Mail-In or Onsite Service Available	●	●	●
Calibration and Detailed Certificate		●	●
ISO 17025 Calibration Available		●	●
Lifetime Warranty			●
Free Repairs			●



Ensure Accuracy and Reliability for your Instruments & Systems

Keep your instruments running like new by signing up for preventative maintenance services with our team of expert technicians. With regularly scheduled preventative maintenance, you'll extend the life of your systems and save time and money by avoiding unexpected interruptions to your work. Additionally, you can have confidence in the accuracy and reliability of your results because we'll ensure your instruments are operating within original specifications.

ISO 17025 Accredited Service Available

Gilson's ISO 17025 accredited calibration labs can offer additional reporting on your calibration certificates for maximum traceability, perfect for GLP/GMP compliant labs. We can provide ISO 17025 compliant service both in our dedicated Service Centers as well as on-site in your lab. You can be sure your pipettes maintain their original accuracy, precision, and performance capabilities.

[Learn more](#)

These pipette service offerings are only available in select locations. Visit www.gilson.com to learn more about our service and support options for your pipettes, instruments, and lab systems.

OEM CAPABILITIES

ORIGINAL EQUIPMENT MANUFACTURER PRODUCTS

Bring your ideas to market faster and with lower development and manufacturing costs by becoming an Original Equipment Manufacturer (OEM) partner with Gilson. We provide reliable and precise liquid handling components or complete systems that can be easily integrated into your core instrument, with support from a worldwide network you can depend on. Our philosophy is simple: build and support relationships that are as strong and reliable as our products.

Get to Market Faster with Our OEM Solutions

As a partner with Gilson, you will work closely with our research and development scientists and engineers and draw on their technical expertise to solve problems and develop your product. From proposal development to finished product and beyond, our team of experts is here to help you every step of the way.



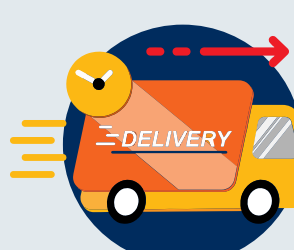
Bring Us Your Idea



Partner with Gilson



Fast Product Development



On-Time Delivery

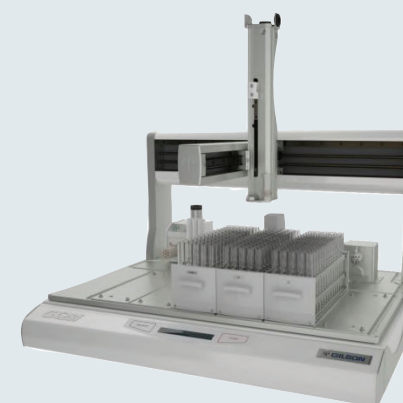
Customization Capabilities

Draw on our proven experience and strong engineering and manufacturing capabilities to help develop your custom product. We offer expertise and assistance throughout the entire process—from development and integration of the product, to support and on-going training.

 Visit www.gilson.com to learn more about our OEM capabilities.

KEY BENEFITS

- Custom Products
- Software Control Options
- Fully Tested and Validated Product
- Custom Branding
- Outstanding Service and Support
- Modular Design for Easy Integration
- ISO 9001 Certified
- Regulatory Compliance
- Custom Packaging and Literature



Highly Customizable Automated Liquid Handling Systems to Fit your Exact Needs

Gilson can provide standard liquid handling instruments to highly customized instrumentation across a wide variety of applications. Customization can be applied to simple, small components or to complete liquid handlers tailored to your unique specifications. Gilson has the liquid handling solutions to meet your requirements. Whether you want to aspirate, collect, dispense, inject, mix, or pump liquids, we can provide reliable, quality OEM products to fit your application.

[Learn more](#)



Increase your Brand Awareness with Value Added Manual Liquid Handling Products

Gilson offers the ability to help increase your brand awareness with value added products. As an industry leader in manual pipetting, we can provide customized tools that deliver the precise control needed for accurate sample and reagent volume transfers. We offer a variety of pipettes in a range of ergonomic designs and volume sizes, as well as pipette controllers, tips, and accessories that enhance the pipetting experience and provide reproducible results. Our OEM/PL pipette is a genuine Gilson product providing the “Best Value” combination of quality, features, service, and price. Additionally, our Account Managers can help you align your company vision with product offerings that can be customized to increase your recognition in the market.

[Learn more](#)



Automate Your Kits Through a Value Added Partnership (VAP)

The Value Added Partnership (VAP) is a shared cooperation in which Gilson maintains ownership of installation and support at your customers' sites. Our VAP option is ideal for reagent manufacturers who wish to offer a complete, automated assay method to their customers without investing in sales or hardware support. In a VAP, you will work with our technical team to automate your method and validate your protocol on a specified Gilson liquid handling system. This shared cooperation allows you to benefit from our technical expertise and global coverage while increasing your kit and consumable revenue.

[Learn more](#)

LIQUID HANDLING

TRUSTED RESULTS BEGIN WITH TRUSTED LIQUID HANDLING TOOLS

Gilson liquid handling tools deliver the precise control you need for sample and reagent volume transfers, ensuring reproducible results while making life in the lab easier. Beginning with the legendary PIPETMAN® technology, our liquid handling tools have evolved with your needs. Ergonomically designed with scientists like you in mind, we offer durable solutions from manual, single channel units to completely automated liquid handling systems.

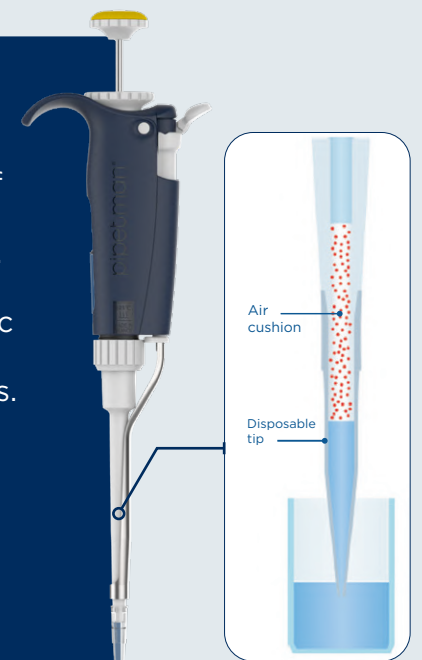
SELECTION GUIDE

	Description	Benefits	Throughput	Comfort
Single Channel, Air-displacement	PIPETMAN® M PIPETMAN® M Connected	<ul style="list-style-type: none"> Ease-of-Use On-Target Performance PIPETMAN® M Connected Makes Manual Processes Verifiable 	L-M-H Medium to High	✓✓✓✓
	MyPIPETMAN®	<ul style="list-style-type: none"> Technical and Functional Choices Ergonomic Design Personalizable Fully Autoclavable 	L-M-H Medium to High	✓✓✓✓
	PIPETMAN® L	<ul style="list-style-type: none"> Performance and Comfort Secure Pipetting Fully Autoclavable 	L-M-H Medium to High	✓✓✓✓
	PIPETMAN®	<ul style="list-style-type: none"> Reliable Results Built-to-Last Easy Pipetting and Handling 	L-M-H Low to Medium	✓✓✓
Multichannel, Air-displacement	PIPETMAN® M PIPETMAN® M Connected	<ul style="list-style-type: none"> Ease-of-Use On-Target Performance PIPETMAN® M Connected Makes Manual Processes Verifiable 	L-M-H Medium to High	✓✓✓✓
	MyPIPETMAN®	<ul style="list-style-type: none"> Technical and Functional Choices Ergonomic Design Personalizable Fully Autoclavable 	L-M-H Medium to High	✓✓✓✓
	PIPETMAN® L	<ul style="list-style-type: none"> Performance and Comfort Secure Pipetting Fully Autoclavable Models Equipped with V-rings Fit Most Tip Brands 	L-M-H Medium to High	✓✓✓✓
	PIPETMAN®	<ul style="list-style-type: none"> Reliable Results Built-to-Last Easy pipetting and handling 	L-M-H Low to Medium	✓✓✓
Positive-displacement	MICROMAN® E	<ul style="list-style-type: none"> Reliable Results Even with Non-Aqueous Liquids Overall Protection Designed with Comfort in Mind 	L-M-H Low to Medium	✓✓✓
Semi-auto	PLATEMASTER®	<ul style="list-style-type: none"> Save Time and Increase Your Productivity Simplifies Sample Prep Convenient for any Microplate Application 	L-M-H High	✓✓✓✓
Automated	PIPETMAX®	<ul style="list-style-type: none"> Upgrade to Automation for Reliable, Accurate Pipetting Free Yourself from Tedious Sample Prep Work Stay Flexible—for Now and for the Future PIPETMAN® Inside 	L-M-H High	✓✓✓✓

PIPETTE FAMILIES

What are Manual Air-Displacement Pipettes?

Air-displacement pipettes are very accurate for standard pipetting applications. The piston, integrated in the lower part of the pipette, moves the liquid under the action of an air cushion (called dead volume) between the pipette and the liquid sample. It is recommended to use an air-displacement pipette with aqueous and non-viscous samples. Temperature and atmospheric pressure, as well as the specific weight and viscosity of the solution, can affect the performance of air-displacement pipettes.

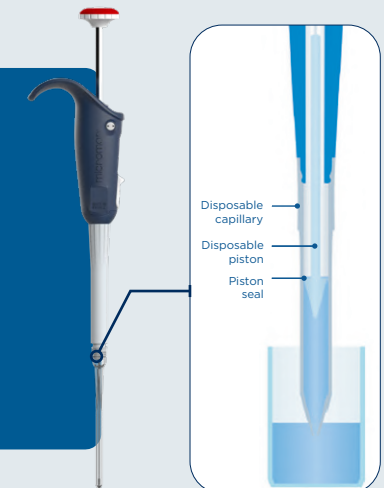


What are Electronic Air-Displacement Pipettes?

Electronic pipettes work like manual air-displacement pipettes under the action of an air cushion. The manual movement of the piston is carried out by an electronic motor, requiring virtually zero pipetting forces. They decrease the risk of RSI-type injuries caused by repetitive pipetting and improve comfort as well as reproducibility at the bench.

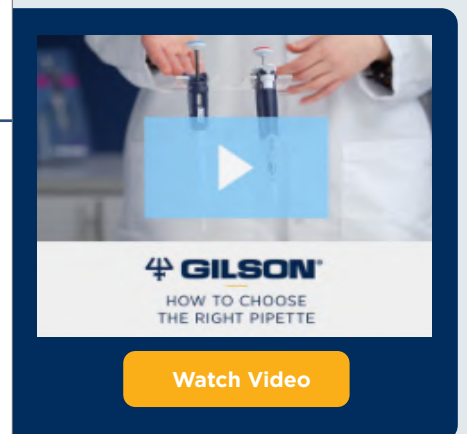
What are Positive-Displacement Pipettes?

Positive-displacement technology is ideal when working with infectious, viscous, foaming, hot, cold, or volatile liquids because the disposable piston within the capillary piston (CP) tip is in direct contact with the sample. The CP technology thus removes any air cushion inside the pipette and ensures the volume accuracy is not affected by the fluid's properties. This also helps prevent contamination and protects both the user and the pipette.



THE RIGHT CHOICE FOR YOUR LIQUID HANDLING

Liquid Types	Applications	Your Gilson Solutions	Associated Gilson Consumables
Aqueous (ex. water, sucrose, Tris, buffer with a pH of 7)	Biology Biochemistry Clinical assays and immunoassays Cell culture Analytical chemistry	PIPETMAN® M Connected* PIPETMAN® M* MyPIPETMAN® L PIPETMAN®	PIPETMAN® DIAMOND Tips AmpliPur® Expert Tips PIPETMAN® Expert Tips*
Viscous (ex. glycerol, surfactants, oil)	Molecular Biology Petrochemistry Point of Care Diagnostic Pharmaceutical Cosmetics Environment Food Quality Control	MICROMAN® E DISTRIMAN®	Capillary Pistons DISTRITIPS®
Volatile (ex. ethanol, hexane, formaldehyde)			
Hot or cold			
Foaming			
Contaminated or toxic (ex. blood, infectious bacteria or viruses, hazardous radioactive isotopes)			
Corrosive (ex. hydrochloric or sulfuric acid)			



MAKE YOUR LAB AS SMART AS YOUR SCIENCE

TRACKMAN® Connected is a tablet with exclusive applications and accessories that make pipetting on different labware more reliable, improving the efficiency and traceability of your experiment.



Boost Your Experiment Reliability

When paired with PIPETMAN® M Connected, the installed PipettePilot® app guides you through your pipetting protocol. The app displays where, when, and how much to pipette with real-time interactions to prevent errors.

Get Immediate Reproducibility

With the digitally documented protocol, your team can be confident that a protocol is being executed the same each time.

Improve the Traceability of your Experiment

Integrate connected tools into your protocols in a safe and convenient way. TRACKMAN Connected offers complete traceability of your experiments by recording pipetting actions and environmental conditions.

Access Pipette Analytics and Calibration History

PipetteScope® informs you exactly when your pipette needs to be calibrated. Through the app, you can easily request a calibration appointment and also view service history reports in one central location. PipetteScope gives you instant access to the pipette usage analytics as well as access to the user guide.

[Download App](#)

Pair it with PIPETMAN® M Connected

Explore new possibilities in protocol execution assistance, traceability, and data acquisition through its Bluetooth® connection to Gilson applications.

For more information about PIPETMAN M Connected, refer to [page 14](#).



Inside Your Kit

Tablet with PipettePilot® and PipetteScope® Apps

Interact with all your apps at the bench with the tablet included in your kit. The tablet comes preloaded with PipettePilot to create and track pipetting tasks. The app displays where and when to pipette with real time interactions to prevent pipetting errors and provides you with a report for complete traceability of your experiment.

Our other application, PipetteScope, helps you keep tabs on your pipette last calibration, user's guide, and other useful pipetting metrics.

Environment Sensor

Monitor temperature, pressure, and humidity during your experiment with your environment sensor.

Benchtop Pipetting Accessories

Get all the accessories to integrate your tablet at the bench in a safe way: microplate holder, tempered glass screen protector, microplate adapter, and strip adapters.

Full range of accessories can be found on [page 28](#).

Watch TRACKMAN® Connected in action

[Watch Video](#)

TRACKMAN® CONNECTED	
Model	Part Number
TRACKMAN Connected EU Plug	FB1020
TRACKMAN Connected UK Plug	FB1021
TRACKMAN Connected US Plug	FB1022

Tools and Resources

- [Specsheet: Pipette Specifications](#)
- [Guide to Pipetting: Tips from Our Experts](#)
- [Case Study: The first Steps of Digitalization and Interoperability in the Analytical Lab](#)

[SHOP NOW](#) Visit www.gilson.com

Make Pipetting Easier for Your Molecular Biology Applications

We've worked closely with QIAGEN to program their gold-standard protocols into TRACKMAN Connected to reduce errors and bring greater traceability to your molecular biology applications.

Depending on your protocol needs, we have three TRACKMAN Connected Starter Kits available: Single Channel, Multichannel, and Pro. Each starter kit includes PIPETMAN M Connected pipettes, TRACKMAN Connected tablet and accessories, and tips.

Contact your local [Gilson sales representative](#) to find out about the availability of this product in your country.

TRACKMAN® CONNECTED STARTER KITS	
Model	Part Number
TRACKMAN Connected Starter Kit Single Channel (EU)	FB10200
TRACKMAN Connected Starter Kit Single Channel (UK)	FB10201
TRACKMAN Connected Starter Kit Single Channel (US)	FB10202
TRACKMAN Connected Starter Kit Multichannel (EU)	FB10210
TRACKMAN Connected Starter Kit Multichannel (UK)	FB10211
TRACKMAN Connected Starter Kit Multichannel (US)	FB10212
TRACKMAN Connected Starter Kit Pro (EU)	FB10220
TRACKMAN Connected Starter Kit Pro (UK)	FB10221
TRACKMAN Connected Starter Kit Pro (US)	FB10222

[SHOP NOW](#) Visit www.gilson.com

pipetman®

M CONNECTED

PIPETTE SMARTER. REPORT FASTER. CONFIDENTLY.

PIPETMAN® M Connected is an electronic, Bluetooth®-enabled pipette that offers accuracy and precision in both standard and repetitive pipetting modes. Requiring virtually no pipetting forces to aspirate and dispense samples, PIPETMAN M Connected helps reduce pipetting fatigue and increase pipetting efficiency. PIPETMAN M Connected is available in 20 models, covering a volume range from 0.5 µL to 10 mL for single channel models, and 0.5 µL to 1200 µL for multichannel models.



Make Manual Processes Verifiable

With PIPETMAN M Connected, explore new possibilities in protocol execution assistance and data acquisition through the Bluetooth® connection to Gilson applications. The pipette interacts in real time with your TRACKMAN® Connected system for increased accuracy and efficiency in both standard and repetitive modes.

GILSON SOFTWARE APPLICATIONS



PipettePilot®

The PipettePilot app comes preloaded on the TRACKMAN Connected tablet. The app displays where and when to pipette in real time to prevent pipetting errors. The app also provides you with a report for complete traceability of your experiment.

PipetteScope®

With PipetteScope, know exactly when your pipette needs to be calibrated, request a calibration appointment, and view service history reports, all in one location. Additionally, with the app, you'll gain visibility into your pipette's usage analytics and get quick access to user's guides.

PIPETMAN M Connected Software

Executing custom protocols has never been easier. PIPETMAN M Connected Software allows you to create, save, and transfer up to ten custom protocols into PIPETMAN M Connected.

Download PipetteScope and PIPETMAN M Connected Software for free on www.gilson.com.



Store Your Electronic Pipettes On Our POWER CARROUSEL™ Charging Stand

Improved efficiency, organization, and protection. Keep your PIPETMAN M Connected operational.

Full range of accessories can be found on page 28.

PIPETMAN® M CONNECTED SINGLE CHANNEL					
Model	PIPETMAN DIAMOND Tips		Part Number	Gilson Specifications	ISO 8655-2
				Standard PIPET mode	REPETITIVE mode volume
				Volume Range	Volume Range
P10M	D10 DL10	DF10ST DFL10ST	F81040	0.5-10 µL	0.5-10 µL
P20M	D200	DF30ST	F81041	2-20 µL	2-20 µL
P100M	D200	DF100ST	F81042	5-100 µL	5-100 µL
P200M	D200 D300	DF200ST DF300ST	F81043	20-200 µL	5-200 µL
P300M	D200 D300	DF200ST DF300ST	F81044	20-300 µL	10-300 µL
P1200M	D1000 D1200	DF1000ST DF1200ST	F81045	100-1200 µL	20-1200 µL
P5000M	D5000		F81046	500-5000 µL	100-5000 µL
P10mLM	D10mL		F81047	1-10 mL	200 µL-10 mL
PIPETMAN® M CONNECTED MULTICHANNEL					
P8x10M	D10 DL10	DF10ST DFL10ST	F81048	0.5-10 µL	0.5-10 µL
P12x10M			F81049		
P8x20M	DL10 D200	DFL10ST DF30ST	F81050	1-20 µL	1-20 µL
P12x20M			F81051		
P8x100M	D200	DF100ST	F81052	10-100 µL	5-100 µL
P12x100M			F81053		
P8x200M	D200 D300	DF100ST DF200ST DF300ST	F81054	20-200 µL	5-200 µL
P12x200M			F81055		
P8x300M	D200 D300	DF200ST DF300ST	F81056	10-300 µL	10-300 µL
P12x300M			F81057		
P8x1200M	D1200	DF1200ST	F81058	50-1200 µL	50-1200 µL
P12x1200M			F81059		

Gilson maximum permissible errors are guaranteed only when PIPETMAN pipettes are used with the recommended PIPETMAN DIAMOND Tips.

Tools and Resources

- Specsheet: Pipette Specifications
- Guide to Pipetting: Tips from Our Experts

Full range of accessories can be found on page 28.

Contact your local Gilson sales representative to find out about the availability of this product in your country.

SHOP NOW

Visit www.gilson.com

pipetman®

M

GUARANTEED PERFORMANCE WITH OUTSTANDING ACCURACY

The PIPETMAN® M electronic pipette combines the simplicity of a mechanical pipette with the consistency of an electronic liquid handling tool. The PIPETMAN M range has been designed for guaranteed accuracy and precision in both standard and repetitive modes for reliable sample preparation.

On-Target Performance

Trust your results with guaranteed performance in both standard and repetitive pipetting modes.

Pipetting Comfort

Lightweight and perfectly balanced with low ejection and volume setting forces, for hours of pipetting comfort.

Ease-of-Use

With a streamlined user interface and four pipetting modes, control of your sample prep is at your fingertips. Switch to custom mode to execute your own protocol transferred from the PIPETMAN M Software.



Store and Charge Your Electronic Pipettes with Our CARROUSEL™ Stand Adapter

Fit onto the CARROUSEL™ Pipette Stand, allowing a electronic PIPETMAN M or PIPETMAN M Connected pipette to be safely stored and charged.

Full range of accessories can be found on [page 28](#).



PIPETMAN® M SINGLE CHANNEL					
Model	PIPETMAN DIAMOND Tips		Part Number	Gilson Specifications	
				Standard PIPET mode	ISO 8655-2
				Volume Range	REPETITIVE mode volume
				Volume Range	Volume Range
P10M	D10 DL10	DF10ST DFL10ST	F81022	0.5-10 µL	0.5-10 µL
P20M	D200	DF30ST	F81023	2-20 µL	2-20 µL
P100M	D200	DF100ST	F81013	5-100 µL	5-100 µL
P200M	D200 D300	DF200ST DF300ST	F81024	20-200 µL	5-200 µL
P300M	D200 D300	DF200ST DF300ST	F81014	20-300 µL	10-300 µL
P1200M	D1000 D1200	DF1000ST DF1200ST	F81015	100-1200 µL	20-1200 µL
P5000M	D5000		F81016	500-5000 µL	100-5000 µL
P10mLM	D10mL		F81017	1-10 mL	200 µL-10 mL
PIPETMAN® M MULTICHANNEL					
P8x10M	D10 DL10	DF10ST DFL10ST	F81025	0.5-10 µL	0.5-10 µL
P12x10M			F81026		
P8x20M	DL10 D200	DFL10ST DF30ST	F81027	1-20 µL	1-20 µL
P12x20M			F81028		
P8x100M	D200	DF100ST	F81018	10-100 µL	5-100 µL
P12x100M			F81019		
P8x200M	D200 D300	DF100ST DF200ST DF300ST	F81029	20-200 µL	5-200 µL
P12x200M			F81030		
P8x300M	D200 D300	DF200ST DF300ST	F81031	10-300 µL	10-300 µL
P12x300M			F81032		
P8x1200M	D1200	DF1200ST	F81020	50-1200 µL	50-1200 µL
P12x1200M			F81021		

Gilson maximum permissible errors are guaranteed only when PIPETMAN pipettes are used with the recommended PIPETMAN DIAMOND Tips.

Tools and Resources

- [Specsheet: Pipette Specifications](#)
- [Guide to Pipetting: Tips from Our Experts](#)

PIPETMAN M is only available in select locations. For more information, please contact your local [Gilson representative](#).

[SHOP NOW](#)

Visit www.gilson.com

MyPipetman®

ENTERPRISE

A UNIQUE COMBINATION OF FUNCTIONAL CHOICES AND PIPETTE PERSONALIZATION

MyPIPETMAN® Enterprise is a series of fully autoclavable pipettes that include technical and personalization options. Unique, reliable, and ergonomic, they are the right solution for enterprises or industries that are looking for better efficiency and performance in daily activities through various applications and workflows.

Design Your Very Own Gilson Pipette Series

MyPIPETMAN Enterprise offers several customization options to ensure efficiency and answer your pipetting needs within various workflows.

Technical Features

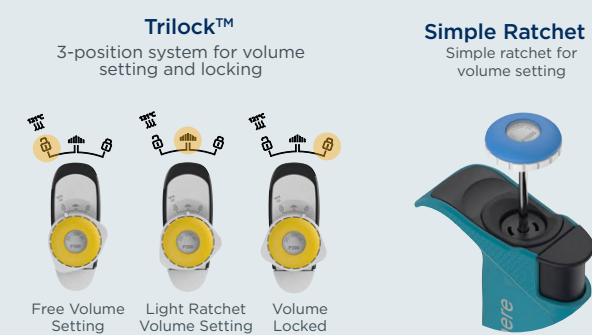
Choose your preferred technical features to optimize the use of your pipette and increase overall productivity in the lab:

- With or without volume locking system (Trilock™ or simple ratchet)
- Reduced or standard pipetting and ejection forces
- Metal or plastic tip ejector (from P2 to P1000 single channel models)

Colors and Extra Personalization Options

Color choices and printing options on your pipette allow for better organization and identification within your applications:

- Handle and lower parts color choices
- One side of the pipette can be printed



MyPIPETMAN Enterprise pipettes are made-to-order pipettes based on your design and technical choices. They are produced in a series of a minimum of 150 units (mix of different volumes). All pipettes inside a series will have the same technical features, same design, and same information printed on the handle.

Watch MyPIPETMAN® in action

Watch Video



MYPIPETMAN® ENTERPRISE SINGLE CHANNEL MODELS				
Model	PIPETMAN® DIAMOND Tips		Part Number	Volume Range (µL)
P2	D10 DL10	DF10ST DFL10ST	FP10001E	0.2-2
P10	D10 DL10	DF10ST DFL10ST	FP10002E	1-10
P20	D200	DF30ST	FP10003E	2-20
P100	D200	DF100ST	FP10004E	10-100
P200	D200 D300	DF200ST DF300ST	FP10005E	20-200
P1000	D1000 D1200	DF1000ST DF1200ST	FP10006E	100-1000
P5000	D5000		FP10007E	500-5000
P10mL	D10mL		FP10008E	1000-10000

MYPIPETMAN® ENTERPRISE MULTICHANNEL MODELS				
P8x10	D10 DL10	DF10ST DFL10ST	FP10009E	0.5-10
P12x10			FP10010E	
P8x20	DL10 D200	DFL10ST DF30ST	FP10011E	2-20
P12x20			FP10012E	
P8x200	D200 D300	DF200ST DF300ST	FP10013E	20-200
P12x200			FP10014E	
P8x300	D200 D300	DF200ST DF300ST	FP10015E	20-300
P12x300			FP10016E	



Colored Windows	
Model	Part Number
Window 3digit Dark Blue MyPIPETMAN	FP070101
Window 3digit White MyPIPETMAN	FP070102
Window 3digit Blue MyPIPETMAN	FP070103
Window 3digit Red MyPIPETMAN	FP070104
Window 3digit Yellow MyPIPETMAN	FP070105
Window 3digit Green MyPIPETMAN	FP070106

Full range of accessories can be found on page 28.

Tools and Resources

Specsheet: MyPIPETMAN Pipette Specifications

Guide to Pipetting: Tips from Our Experts

Video: MyPIPETMAN Two-Minute Inspection Video

Benefit from a special care with our flexible, tiered service level offerings, tailored to fit your lab's needs, while increasing the lifespan of your pipettes.

PIPETMAN DIAMOND® Tips are designed to fit your MyPIPETMAN perfectly and guarantee maximum accuracy and precision.

SHOP NOW
Visit www.gilson.com

MyPipetman®

SELECT

SELECT OPTIONS FOR IMPROVED PIPETTING

Ergonomic, safe, and reliable, MyPIPETMAN® Select offers volume setting choice and optional handle personalization for an optimal use in various protocols.

Set and Secure the Volume your Preferred Way

The unique and patented Trilock™ volume-locking system enables you to choose different positions when setting the volume:

- Free volume setting position for quick and effortless volume adjustment
- Light ratchet volume setting for precise volume adjustment
- Volume locked position for secure pipetting

With this new Trilock™ system, the volume is adjusted simply by turning the push button of the pipette.



Ergonomic Design

Lightweight and well-balanced, MyPIPETMAN Select has an elegant design with a textured effect for a better grip.

With no compromise on quality and performance, the built-in ejection system provides reduced tip ejection forces. This patented ejection system reinforces the pipette's ergonomics for convenient use throughout the day.

Extra Personalization with Accessories

Other accessories like colored windows, tip holders, and tip ejectors are available in different colors and material for additional customization and ease of use. Standard accessories, such as pipette stands and holders, are also available.

Personalize your Pipette for Optimal Use

MyPIPETMAN Select can have their handles printed on demand. Identify your pipette to avoid any risk of contamination by dedicating it to a specific liquid or workflow step and improve your lab Lean Management process.



Your Text Here



MYPIPETMAN® SELECT SINGLE CHANNEL MODELS				
Model	PIPETMAN® DIAMOND Tips		Part Number	Volume Range (µL)
P2	D10 DL10	DF10ST DFL10ST	FP10001S	0.2-2
P10	D10 DL10	DF10ST DFL10ST	FP10002S	1-10
P20	D200	DF30ST	FP10003S	2 -20
P100	D200	DF100ST	FP10004S	10-100
P200	D200 D300	DF200ST DF300ST	FP10005S	20-200
P1000	D1000 D1200	DF1000ST DF1200ST	FP10006S	100-1000
P5000	D5000		FP10007S	500-5000
P10mL	D10mL		FP10008S	1000-10000

MYPIPETMAN® SELECT MULTICHANNEL MODELS				
P8x10	D10 DL10	DF10ST DFL10ST	FP10009S	0.5-10
P12x10			FP10010S	
P8x20	DL10 D200	DFL10ST DF30ST	FP10011S	2-20
P12x20			FP10012S	
P8x200	D200 D300	DF200ST DF300ST	FP10013S	20-200
P12x200			FP10014S	
P8x300	D200 D300	DF200ST DF300ST	FP10015S	20-300
P12x300			FP10016S	

MYPIPETMAN® SELECT KIT				
Model	Part Number	Models	PIPETMAN® DIAMOND Tips	Accessories
MyPIPETMAN® Select 4-Pipette Kit	F167390	P2 P20 P200 P1000	DL10 D200 D1000	4 SINGLE pipette holders 4 Plastic ejectors 6 colored windows (1 of each color)

Colored Windows	
Model	Part Number
Window 3digit Dark Blue MyPIPETMAN	FP070101
Window 3digit White MyPIPETMAN	FP070102
Window 3digit Blue MyPIPETMAN	FP070103
Window 3digit Red MyPIPETMAN	FP070104
Window 3digit Yellow MyPIPETMAN	FP070105
Window 3digit Green MyPIPETMAN	FP070106

Full range of accessories can be found on page 28.

Tools and Resources

Specsheet: MyPIPETMAN Specifications | **Video:** MyPIPETMAN Select Video

Guide to Pipetting: Tips from Our Experts | **Video:** Mypipetman Two-Minute Inspection Video

SHOP NOW | Visit www.gilson.com

INCREASED COMFORT AND PRODUCTIVITY

Designed for performance and comfort, PIPETMAN® L offers a comprehensive range of models, adapted to all your needs.

Convenient Use

Lightweight and balanced, PIPETMAN L combines an ergonomic design with minimized pipetting forces, giving you the ability to pipette longer without fatigue.

Right-handed or left-handed? No problem. Adjust the location of the tip ejector to the most comfortable position for you.

Extended Range & Tip Compatibility

Available as a fixed or variable volume, the PIPETMAN L line covers a full volume range from 0.2 µL to 10 mL for single channel models, and from 0.5 µL to 1200 µL for multichannel models. Precise, accurate, and reliable, they can be intensively used with confidence in many applications.

Four PIPETMAN L multichannel models (model name ending with VR), covering a volume range from 20 µL to 300 µL, are equipped with V-rings at the bottom of the tip holders for a proper fit with most tip brands (using the Rocky Rack technique is recommended).

Secure Pipetting

Reduce pipetting errors and avoid accidental volume changes during pipetting cycles with a true volume-locking mechanism for improved accuracy and precision. PIPETMAN L variable volume models are all fully autoclavable without disassembly for maximum convenience and protection from cross-contamination.

Watch PIPETMAN® L in action



Watch Video



Store Your Pipettes On Our CARROUSEL™ Pipette Stand

The CARROUSEL™ Pipette Stand holds up to seven Gilson single or multichannel pipettes, protecting them from contamination.

Full range of accessories can be found on page 28.



PIPETMAN® L SINGLE CHANNEL VARIABLE VOLUME MODELS					
Model	PIPETMAN® DIAMOND Tips		Part Number		Volume Range (µL)
			With Stainless Steel Ejector	With Plastic Ejector	
P2L	D10	DF10ST	FA10001M	FA10001P	0.2-2
P10L	DL10	DF10ST	FA10002M	FA10002P	1-10
P20L	D200	DF30ST	FA10003M	FA10003P	2-20
P100L	D200	DF100ST	FA10004M	FA10004P	10-100
P200L	D200	DF200ST	FA10005M	FA10005P	20-200
P1000L	D1000	DF1000ST	FA10006M	FA10006P	100-1000
P5000L	D5000		FA10007		500-5000
P10mLL	D10mL		FA10008		1000-10000

PIPETMAN® L MULTICHANNEL MODELS				
Model	PIPETMAN® DIAMOND Tips		Part Number	Volume (µL)
P8x10L	D10	DF10ST	FA10013	0.5-10
P12x10L	DL10	DFL10ST	FA10014	
P8x20L	DL10	DFL10ST	FA10009	2-20
P12x20L	D200	DF30ST	FA10010	
P8x200L	D200	DF200ST	FA10011	20-200
P12x200L	D300	DF300ST	FA10012	
P8x200LVR	D200	DF200ST	FA10035	20-200
P12x200LVR	D300	DF300ST	FA10036	
P8x300L	D200	DF200ST	FA10015	20 - 300
P12x300L	D300	DF300ST	FA10016	
P8x300LVR	D200	DF200ST	FA10037	20-300
P12x300LVR	D300	DF300ST	FA10038	
P8x1200L	D1200		FA10039	100-1200
P12x1200L	DF1200ST		FA10040	

Gilson maximum permissible errors are guaranteed only when PIPETMAN® pipettes are used with the recommended PIPETMAN® DIAMOND Tips. | For a pipette with a plastic tip ejector, the part number ends with the letter P. | For a pipette with a stainless steel tip ejector, the part number ends with the letter M. | P5000L and P10mLL are equipped with plastic tip ejectors.

PIPETMAN® L KITS				
Model*	Part Number	PIPETMAN L Models	PIPETMAN® DIAMOND Tips	Accessories
PIPETMAN L Starter Kit	F167350	P20L P200L P1000L	D200 D1000	3 SINGLE™ pipette holders 3 plastic ejectors
PIPETMAN L Micro-volume Kit	F167550	P2L P10L P100L	DL10 D200	3 SINGLE™ pipette holders 3 plastic ejectors
PIPETMAN L 4-Pipette Kit	F167370	P2L P20L P200L P1000L	DL10 D200 D1000	4 SINGLE™ pipette holders 4 Plastic ejectors

Tools and Resources

Specsheet: PIPETMAN L Specifications Guide to Pipetting: Tips from Our Experts

Poster: Two-Minute Inspection Poster

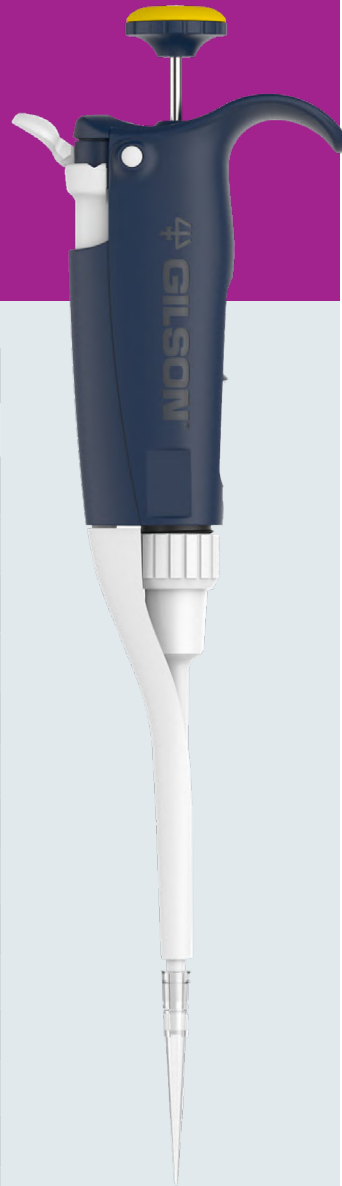
[SHOP NOW](#) Visit www.gilson.com

pipetman®

L

COMFORTABLE PIPETTING WITH SECURED FIXED VOLUME

The PIPETMAN® L Fixed pipettes offer the same comfortable, lightweight design as the variable volume models with a fixed volume that reduces the risk of any volume error during pipetting. This makes them an ideal choice for clinical diagnostics, quality control, and any routine testing applications even for non-trained lab technicians. Fifteen models of the air-displacement-based PIPETMAN L Fixed pipettes are available, covering a volume range of 1 µL to 5 mL.



PIPETMAN® L FIXED VOLUME MODELS				
Model	PIPETMAN® DIAMOND Tips		Part Number	Volume (µL)
F1L	D10 DL10	DF10ST DFL10ST	FA10017	1
F2L	D10 DL10	DF10ST DFL10ST	FA10018	2
F5L	D10 DL10	DF10ST DFL10ST	FA10019	5
F10L	D10 DL10	DF10ST DFL10ST	FA10020	10
F20L	D200	DF30ST	FA10021	20
F25L	D200	DF30ST	FA10022	25
F50L	D200	DF100ST	FA10023	50
F100L	D200	DF100ST	FA10024	100
F200L	D200	DF200ST	FA10025	200
F250L	D300	DF300ST	FA10026	250
F300L	D1000	DF1000ST	FA10027	300
F400L	D1000	DF1000ST	FA10028	400
F500L	D1000	DF1000ST	FA10029	500
F1000L	D1000	DF1000ST	FA10030	1000
F5000L	D5000		FA10031	5000

Fixed volume PIPETMAN L are equipped with a plastic ejector. Depending on your needs and applications, metal ejectors are available as spare parts.

Tools and Resources

- Specsheet:** PIPETMAN L Specifications
- Guide to Pipetting:** Tips from Our Experts
- Poster:** Two-Minute Inspection Poster



Store Your Pipettes on Our CARROUSEL™ Pipette Stand

The CARROUSEL™ Pipette Stand holds up to seven Gilson single or multichannel pipettes, protecting them from contamination.

Full range of accessories can be found on page 28.

Visit www.gilson.com

SHOP NOW



RECOGNIZED RELIABILITY AND PROVEN DURABILITY COMBINED WITH EASY PIPETTING AND HANDLING

Recognized as the pipetting standard for its reliability and proven durability, PIPETMAN® combines legendary accuracy, precision, and durability with easy pipetting and handling.

Legendary Performance

Accurate and precise, PIPETMAN® air-displacement pipettes are recognized as one of the world standard.

They come in a large range of volumes, including single and multichannel models, allowing you to handle various sample types with confidence.

Easy Pipetting

PIPETMAN feels like the PIPETMAN® Classic but with lower forces and enhanced standard pipetting habits.

Built-to-Last and Convenient

Made of resistant materials, PIPETMAN offers premium durability. Built-to-last, it is the economical solution for years of pipetting.

Simple to Maintain

Routine cleaning and maintenance are all that is required to keep PIPETMAN in top condition for years. The PIPETMAN design allows for easy access to user-serviceable parts, along with a fully autoclavable tip holder and ejector.

Store Your Pipettes On Our SINGLE™ Holder Pipette Stand

Convenient option for holding a single or multichannel PIPETMAN® pipette, protecting the pipette from contamination without taking up any precious bench space.

Full range of accessories can be found on page 28.



PIPETMAN® SINGLE CHANNEL				
Model	PIPETMAN® DIAMOND Tips		Part Number	Volume Range (µL)
P2	D10	DF10ST	F144054M	0.2-2
P10**	DL10	DFL10ST	F144055M	1-10
P20	D200	DF30ST	F144056M	2-20
P100	D200	DF100ST	F144057M	10-100
P200	D200	DF200ST	F144058M	20-200
P1000	D1000	DF1000ST	F144059M	100-1000
P5000***	D5000		F144066	500-5000
P10mL***	D10mL		F144067	1000-10000

PIPETMAN® MULTICHANNEL				
P8x10	D10	DF10ST	F144068	1-10
P12x10	DL10	DFL10ST	F144069	
P8x20	DL10	DFL10ST	F144070	2-20
P12x20	D200	DF30ST	F144071	
P8x200	D200	DF200ST	F144072	20-200
P12x200	D300	DF300ST	F144073	
P8x300	D200	DF200ST	F144074	30-300
P12x300	D300	DF300ST	F144075	

Gilson maximum permissible errors are guaranteed only when PIPETMAN® pipettes are used with the recommended PIPETMAN® DIAMOND Tips. | **P10 model can be used up to 0.5 µL. | ***P5000 and P10mL do not have tip ejectors.

PIPETMAN® KIT				
Description	Part Number	PIPETMAN® Models	PIPETMAN DIAMOND Tips Included	Accessories
PIPETMAN® Starter Kit	F167900	P20 P200 P1000	D200 D1000	3 SINGLE pipette holders 3 PIPETMAN Comfort Handles 1 Sheet of 12 Comfort Handle labels
PIPETMAN® Micro-volume Kit	F167800	P2 P10 P100	DL10 D200	3 SINGLE pipette holders 3 PIPETMAN Comfort Handles 1 Sheet of 12 Comfort Handle labels
PIPETMAN® Large-volume Kit	F167920	P5000 P10mL	D5000 D10mL	2 SINGLE pipette holders 2 PIPETMAN Comfort Handles 1 Sheet of 12 Comfort Handle labels 2 bags of 10 filters
PIPETMAN® Four Pipette Kit	F167360	P2 P20 P200 P1000	DL10 D200 D1000	4 SINGLE pipette holders 4 PIPETMAN Comfort Handles 1 Sheet of 12 Comfort Handle labels

Tools and Resources

Specsheet: PIPETMAN Specifications **Poster:** Two-Minute Inspection Poster

Guide to Pipetting: Tips from Our Experts

Benefit from a special care with our flexible, tiered service level offerings, tailored to fit your lab's needs, while increasing the lifespan of your pipettes.

PIPETMAN DIAMOND® Tips are designed to fit your MyPIPETMAN perfectly and guarantee maximum accuracy and precision.

[SHOP NOW](#) Visit www.gilson.com

PIPETTE ACCESSORIES

CARROUSEL™ PIPETTE STAND

Protects pipettes from shocks and contamination
Holds up to seven Gilson pipettes for space saving

Ordering information

CARROUSEL, stand for 7 pipettes	F161401
---------------------------------	---------

[SHOP NOW](#) 



POWER CARROUSEL™

PIPETMAN® M and PIPETMAN® M Connected charging stand

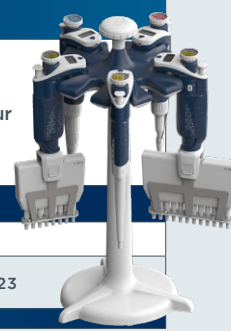
Charges up to five pipettes at once in one hour

Always keeps your PIPETMAN M and PIPETMAN M Connected operational

Ordering information

POWER CARROUSEL	FB1001
PIPETMAN M Stand Adaptor for CARROUSEL Pipette Stand	F807023

[SHOP NOW](#) 



SINGLE™ PIPETTE HOLDER

Holds your single or multichannel PIPETMAN®, PIPETMAN® L, and MyPIPETMAN® models

Sticks to any smooth, dry surface

Prevents liquid from running inside shaft

Ordering information

Single Pipette Holder	F161406
-----------------------	---------

[SHOP NOW](#) 



UNIVERSAL MULTICHANNEL STAND

Holds any brand of 8- or 12-channel pipettes securely
Compact design to save space

Ordering information

Universal Multichannel Stand	F161417
------------------------------	---------

[SHOP NOW](#) 



TRIO™ PIPETTE STAND

Safely stores and protects three PIPETMAN®, PIPETMAN® L, or MyPIPETMAN® models

Helps organize your workbench

Ordering information

TRIO Pipette Stand for 3 pipettes	F161405
-----------------------------------	---------

[SHOP NOW](#) 



DISPOSABLE FILTERS

For PIPETMAN®, PIPETMAN® L, and MyPIPETMAN® P5000 and P10mL models

Ordering information

Bag of 10 Filters for P5000/P10mL	F161280
Bag of 100 Filters for P5000/P10mL	F161241

[SHOP NOW](#) 



PIPETMAN COMFORT HANDLE

Clips on to PIPETMAN® models

Reduces the force needed to grip the pipette for maximum comfort

Ordering information

COMFORT HANDLE pack of 3, blue	F161486
COMFORT HANDLE pack of 3, white	F161488
COMFORT HANDLE pack of 50, blue	F161485
COMFORT HANDLE pack of 50, white	F161487
COMFORT HANDLE stickers, 120	F161499

[SHOP NOW](#) 



GILSON REAGENT RESERVOIRS

Disposable, ideal for dispensing reagent with multichannel pipettes

25 mL and 50 mL available

Ordering information

Reagent Reservoir 25 mL, 100	F267660
Reagent Reservoir 50 mL, 100	F267670

[SHOP NOW](#) 



JIMMY™ MICROTUBE OPENER

Clips on to PIPETMAN® models

Increases pipetting efficiency

Lessens the fatigue associated with manual tube opening

Ordering information

The JIMMY Microtube Opener	F144983
----------------------------	---------

[SHOP NOW](#) 



COLORÉD WINDOWS FOR MYPIPETMAN®

Colored windows for MyPIPETMAN® models

Ideal for identification, extra-personalization, or more convenient use

Ordering information

Window 3digit Dark Blue	FP070101
Window 3digit White	FP070102
Window 3digit Blue	FP070103
Window 3digit Red	FP070104
Window 3digit Yellow	FP070105
Window 3digit Green	FP070106

[SHOP NOW](#) 



METAL TIP EJECTORS FOR MYPIPETMAN®

For MyPIPETMAN®

Ordering information

Metal Ejector P2/P10 MyPIPETMAN	FP070111 (Dark Blue)
	FP070112 (White)
Metal Ejector P20 MyPIPETMAN	FP070121 (Dark Blue)
	FP070122 (White)
Metal Ejector P100 MyPIPETMAN	FP070131 (Dark Blue)
	FP070132 (White)
Metal Ejector P200 MyPIPETMAN	FP070141 (Dark Blue)
	FP070142 (White)
Metal Ejector P1000 MyPIPETMAN	FP070151 (Dark Blue)
	FP070152 (White)

[SHOP NOW](#) 



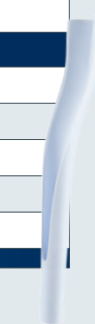
PLASTIC EJECTORS FOR PIPETMAN®

For PIPETMAN® and PIPETMAN® L models

Ordering information

Plastic ejector P2/P10 with adapter	F107027
Plastic ejector P20	F107028
Plastic ejector P100	F107029
Plastic ejector P200	F107030
Plastic ejector P1000	F107031

[SHOP NOW](#) 



EJECTOR ADAPTORS FOR MYPIPETMAN®

For MyPIPETMAN®

Ordering information

Metal Ejector Adaptor P2/P10 Translucent	FP070210
Metal Ejector Adaptor P2/P10 White	FP070212
Plastic Ejector Adaptor P2/P10 White	FP070222

[SHOP NOW](#) 



COLORIS™ IDENTIFICATION CLIPS

Identify or personalize your PIPETMAN®, PIPETMAN® L, and MyPIPETMAN® models

Write your name or application to avoid mix-ups and then snap into place

Ordering information

10 Coloris Identification Clips, mixed colors	F161301
10 Coloris Identification Clips, red	F161302
10 Coloris Identification Clips, yellow	F161303
10 Coloris Identification Clips, green	F161304
10 Coloris Identification Clips, blue	F161305
10 Coloris Identification Clips, white	F161306

[SHOP NOW](#) 



PLASTIC TIP EJECTORS FOR MYPIPETMAN®

For MyPIPETMAN®

Ordering information

Plastic Ejector P2/P10 MYPIPETMAN	FP070161 (Dark Blue)
	FP070162 (White)
Plastic Ejector P20 MYPIPETMAN	FP070171 (Dark Blue)
	FP070172 (White)
Plastic Ejector P100 MYPIPETMAN	FP070181 (Dark Blue)
	FP070182 (White)
Plastic Ejector P200 MYPIPETMAN	FP070191 (Dark Blue)
	FP070192 (White)
Plastic Ejector P1000 MYPIPETMAN	FP070201 (Dark Blue)
	FP070202 (White)

[SHOP NOW](#) 



HIGHEST QUALITY TIPS FOR SUPERIOR RESULTS

Not all pipette tips are created equal. Trust Gilson's PIPETMAN® DIAMOND Tips to deliver the accuracy and precision your experiments demand. All tips are manufactured using the highest quality materials and state-of-the-art manufacturing techniques so you can be assured of consistent lot-to-lot performance.



Guarantee Your PIPETMAN® Results

PIPETMAN DIAMOND Tips are designed to fit your PIPETMAN perfectly. Using PIPETMAN DIAMOND Tips in conjunction with your Gilson pipette guarantees maximum accuracy and precision.

Affordable and Versatile For Every Application

Your needs, budget, and tip consumption vary according to your specific research activity. With our extensive range of packaging, PIPETMAN DIAMOND Tips are an affordable option for every lab and every application.

Contamination-Free

Our tips are made of the highest-grade material within a fully traceable clean room environment, ensuring they offer low retention and are free of contaminants that can alter your experiments. From mold to bench, they are guaranteed, certified, and traceable to meet the most stringent demands in many applications.

Choose the Right Tip for Your Needs

From purity level to volume range, this handy interactive tip selection guide will help you find the perfect tip for your application. Download now to get a clear view of our entire pipette tips offering.

Download Tip Selection Table



Tools and Resources

Poster: [Tips Compatibility Charter](#)

WIDE RANGE OF TIP PACKAGING

TIPACK™

The design is more compact, convenient, ergonomic and eco-friendly

ROCKY RACK system and hinged 180° angled lid makes it extremely easy to fit tips on multichannel pipettes

Fully autoclavable

Available as sterilized and filter tips



SHOP NOW

TOWERPACK

A quick, easy, and affordable rack refill system

Uses 60% less space on your bench and 70% less plastic than regular rack boxes

The whole range of TOWERPACK fits the amazingly easy-to-use universal reload box

One-hand system operation

Fully autoclavable

Available sterilized



SHOP NOW

REFILL VERSIONS

Individually wrapped racks of tips that are convenient, clean, and eco-friendly

Ready to use, just peel the lid and insert into the empty box

Uses 45% less plastic than regular rack box

Fully autoclavable

Available as sterilized and filter tips



SHOP NOW

RELOAD PACK

Quickest way to reload an empty box

Uses 70% less plastic, recyclable packaging is eco-friendly

Easy to store, takes up less bench space

Affordable and convenient

Fully autoclavable



SHOP NOW

EASYPACK AND ECOPACK

Purchase in bulk and save money by simply reloading these tips into empty racks

Bags are sealed with rapid-sealing strip for easy access and to prevent contamination

Minimal waste

Fully autoclavable

EASYPACK: 5 bags x 200 tips

ECOPACK: 10 bags x 1000 tips



SHOP NOW

STERILPACK

Individually wrapped sterilized tips

Complete protection from contaminants up to the moment of use

Wrapped in medical-grade quality plastic

Sterilization guaranteed for 5 years

400 individually wrapped sterilized tips



SHOP NOW



After your purchase, detailed quality and conformity information can be found on our quality certificates, available for download at <http://go.gilson.com/TIPQC>.

STANDARD PIPETMAN® DIAMOND TIPS						
	Description	Volume Range	Tip Length	Qty/Pack	Autoclavable Tips	Sterilized Tips
					Part Number	Part Number
RELOAD PACK	DL10 RELOAD PACK	0.1-20 µL	45 mm	960	F167012	-
	D200 RELOAD PACK	2-200 µL	51 mm	960	F167013	-
	D1000 RELOAD PACK	100-1000 µL	66 mm	576	F167014	-
REFILL VERSIONS	DL10 REFILL VERSIONS	0.1-20 µL	45 mm	960	F172200	F172201
	D200 REFILL VERSIONS	2-200 µL	51 mm	960	F172300	F172301
	D300 REFILL VERSIONS	10-300 µL	51 mm	960	F172400	F172401
	D1000 REFILL VERSIONS	100-1000 µL	66 mm	960	F172500	F172501
	D1200 REFILL VERSIONS	50-1200 µL	84 mm	960	F172800	F172801
	D10 TIPACK	0.1-10 µL	30 mm	960	F171100	F171101
TIPACK	DL10 TIPACK	0.1-20 µL	45 mm	960	F171200	F171201
	D200 TIPACK	2-200 µL	51 mm	960	F171300	F171301
	D300 TIPACK	10-300 µL	51 mm	960	F171400	F171401
	D1000 TIPACK	100-1000 µL	66 mm	960	F171500	F171501
	D1200 TIPACK	50-1200 µL	84 mm	960	F171600	F171601
	D5000 TIPACK	0.5-5 mL	10.4 cm	600	F161370	-
	D10mL TIPACK	1-10 mL	16 cm	240	F161230	-
TOWERPACK	D10 TOWERPACK	0.1-10 µL	30 mm	960	F167101	F167201
	DL10 TOWERPACK	0.1-20 µL	45 mm	960	F167102	F167202
	D200 TOWERPACK	2-200 µL	51 mm	960	F167103	F167203
	D300 TOWERPACK	10-300 µL	51 mm	960	F167105	F167205
	D1000 TOWERPACK	100-1000 µL	66 mm	672	F167104	F167204
ECOPACK	D10 ECOPACK	0.1-10 µL	30 mm	10,000	F161630	-
	DL10 ECOPACK	0.1-20 µL	45 mm	10,000	F161450	-
	D200 ECOPACK	2-200 µL	51 mm	10,000	F161930	-
	D300 ECOPACK	10-300 µL	51 mm	10,000	F161730	-
	D1000 ECOPACK	100-1000 µL	66 mm	10,000	F161670	-
	D1200 ECOPACK	50-1200 µL	84 mm	10,000	F161110	-
EASYPACK	D10 EASYPACK (5 bags of 200)	0.1-10 µL	30 mm	1,000	F161631	-
	DL10 EASYPACK (5 bags of 200)	0.1-20 µL	45 mm	1,000	F161451	-
	D200 EASYPACK (5 bags of 200)	2-200 µL	51 mm	1,000	F161931	-
	D300 EASYPACK (5 bags of 200)	10-300 µL	51 mm	1,000	F161731	-
	D1000 EASYPACK (5 bags of 200)	100-1000 µL	66 mm	1,000	F161671	-
	D1200 EASYPACK (5 bags of 200)	50-1200 µL	84 mm	1,000	F161111	-
	D5000 EASYPACK (3 bags of 334)	0.5-5 mL	10.4 cm	1,002	F161571	-
	D10mL EASYPACK (4 bags of 50)	1-10 mL	16 cm	200	F161210	-
STERIL PACK	D200ST STERILPACK	2-200 µL	51 mm	400	-	F161330
	D1000ST STERILPACK	100-1000 µL	66 mm	400	-	F161340

Visit www.gilson.com

SHOP NOW 

PIPETMAN® DIAMOND FILTER TIPS

	Description	Volume Range	Tip Length	Qty/Pack	Sterilized Tips	
					Part Number	Part Number
REFILL VERSIONS	DFL10ST REFILL VERSIONS	0.1-10 µL	45 mm	960	F172203	
	DF30ST REFILL VERSIONS	2-30 µL	51 mm	960	F172303	
	DF100ST REFILL VERSIONS	10-100 µL	51 mm	960	F172403	
	DF200ST REFILL VERSIONS	20-200 µL	51 mm	960	F172503	
	DF300ST REFILL VERSIONS	10-300 µL	51 mm	960	F172703	
	DF1000ST REFILL VERSIONS	100-1000 µL	66 mm	960	F172603	
	DF1200ST REFILL VERSIONS	50-1200 µL	84 mm	960	F172803	
	DF10ST Filter TIPACK	0.1-10 µL	30 mm	960	F171103	
TIPACK	DFL10ST Filter TIPACK	0.1-10 µL	45 mm	960	F171203	
	DF30ST Filter TIPACK	2-30 µL	51 mm	960	F171303	
	DF100ST Filter TIPACK	10-100 µL	51 mm	960	F171403	
	DF200ST Filter TIPACK	20-200 µL	51 mm	960	F171503	
	DF300ST Filter TIPACK	10-300 µL	51 mm	960	F171603	
	DF1000ST Filter TIPACK	100-1000 µL	66 mm	960	F171703	
	DF1200ST Filter TIPACK	50-1200 µL	84 mm	960	F171803	

D10 are short collar tips. DL10 are long collar tips.

EMPTY RELOAD BOXES

Description	Qty/Pack	Part Number
Universal Reload Box (1 rack) for TOWERPACK	1	F167100
Empty Box for Use With REFILL VERSIONS and RELOAD PACKS: DL10/DFL10ST D200/DF30ST/DF100ST/DF200ST D300/DF300ST	2	F171204
Empty Box for Use With REFILL VERSIONS and RELOAD PACKS: D1000/D1200/DF1000ST/DF1200ST	2	F171504



Universal Reload Box for use with TOWERPACKS.



Empty Box for use with REFILL VERSIONS and RELOAD PACKS.



Empty Rack for use with ECOPACK and EASYPACK loose tips.

EMPTY RELOAD RACKS

Description	Qty/Pack	Part Number
D10 Empty Racks for ECOPACK and EASYPACK	2	F171102
DL10 Empty Racks for ECOPACK and EASYPACK	2	F171202
D200 Empty Racks for ECOPACK and EASYPACK	2	F171302
D300 Empty Racks for ECOPACK and EASYPACK	2	F171402
D1000/D1200 Empty Racks for ECOPACK and EASYPACK	2	F171502
D5000 Empty Rack for ECOPACK and EASYPACK	1	F161360
D10mL Empty Rack for ECOPACK and EASYPACK	1	F161220

REFILL VERSIONS FOR PIPETMAX®-CERTIFIED 384-WELL

	Description	Volume Range	Tip Length	Qty/Pack	Autoclavable Tips	Sterilized Tips
					Part Number	Part Number
REFILL VERSIONS	DSL10 REFILL VERSIONS 384-Certified	0.1-20 µL	45 mm	960	F172210	F172211
	DS200 REFILL VERSIONS 384-Certified	2-200 µL	51 mm	960	F172310	F172311
	DS1000 REFILL VERSIONS 384-Certified	100-1000 µL	66 mm	960	F172510	F172511
	D1200 REFILL VERSIONS 384-Certified	50-1200 µL	84 mm	960	F172800	F172801
	DSFL10ST REFILL VERSIONS 384-Certified	0.1-10 µL	45 mm	960	-	F172213
FILTER REFILL VERSIONS	DSF30ST REFILL VERSIONS 384-Certified	2-30 µL	51 mm	960	-	F172313
	DSF200ST REFILL VERSIONS 384-Certified	20-200 µL	51 mm	960	-	F172513
	DSF1000ST REFILL VERSIONS 384-Certified	100-1000 µL	66 mm	960	-	F172613



PIPETMAN® EXPERT TIPS							
	Description	Volume Range	Tip Length	Pack		Case	
				Qty	Part Number	Qty	Part Number
FILTER TIPS	EF10ST Sterilized Filter Tips	0.1 - 10 µL	28.83 mm	960	F1731031	4,800	F1731032
	EFL10ST Sterilized Filter Tips	0.1 - 10 µL	45.34 mm	768	F1732031	3,072	F1732032
	EF20ST Sterilized Filter Tips	1 - 20 µL	51.44 mm	768	F1733031	3,072	F1733032
	EF100ST Sterilized Filter Tips	1 - 100 µL	51.44 mm	768	F1734031	3,072	F1734032
	EF200ST Sterilized Filter Tips	1 - 200 µL	58.57 mm	768	F1735031	3,072	F1735032
	EF300ST XL Sterilized Filter Tips	1 - 300 µL	77.50 mm	384	F1736031	3,072	F1736032
TIPACK	EF1000ST XL Sterilized Filter Tips	50 - 1250 µL	102.2 mm	384	F1737031	3,072	F1737032
	E10 TIPACK	0.1 - 10 µL	28.83 mm	960	F1731001	4,800	F1731002
	EL10 TIPACK	0.1 - 20 µL	45.34 mm	768	F1732001	3,072	F1732002
	E200 TIPACK	1 - 200 µL	51.44 mm	768	F1733001	3,072	F1733002
	E300 TIPACK	1 - 300 µL	58.57 mm	768	F1736001	3,072	F1736002
	E1000 XL TIPACK	50 - 1250 µL	102.2 mm	384	F1735001	3,072	F1735002
STERILIZED TIPACK	E10ST Sterilized TIPACK	0.1 - 10 µL	28.83 mm	960	F1731011	4,800	F1731012
	EL10ST Sterilized TIPACK	0.1 - 20 µL	45.34 mm	768	F1732011	3,072	F1732012
	E200ST Sterilized TIPACK	1 - 200 µL	51.44 mm	768	F1733011	3,072	F1733012
	E300ST Sterilized TIPACK	1 - 300 µL	58.57 mm	768	F1736011	3,072	F1736012
	E1000ST XL Sterilized TIPACK	50 - 1250 µL	102.2 mm	384	F1735011	3,072	F1735012
TOWERPACK	EL10 TOWERPACK Reload System	0.1 - 20 µL	45.34 mm	960	F1732051	3,840	F1732052
	E200 TOWERPACK Reload System	1 - 200 µL	51.44 mm	960	F1733051	3,840	F1733052
	E300 TOWERPACK Reload System	1 - 300 µL	58.57 mm	960	F1736051	3,840	F1736052
	E1000 XL TOWERPACK Reload System	50 - 1250 µL	102.2 mm	768	F1735051	3,072	F1735052
	EL10 TOWERPACK Reload Kits	0.1 - 20 µL	45.34 mm	960	F1732061	-	-
	E200 TOWERPACK Reload Kits	1 - 200 µL	51.44 mm	960	F1733061	-	-
	E300 TOWERPACK Reload Kits	1 - 300 µL	58.57 mm	960	F1736061	-	-
MEGAPACK / EASYPACK	E1000 TOWERPACK Reload Kits	50 - 1250 µL	102.2 mm	768	F1735061	-	-
	EL10ST Sterilized MEGAPACK	0.1 - 20 µL	45.34 mm	960	F1732071	4,800	F1732072
	EL200ST Sterilized MEGAPACK	1 - 200 µL	51.44 mm	960	F1733071	4,800	F1733072
	EL10 EASYPACK	0.1 - 20 µL	45.34 mm	1,000	F1734511	10,000	F1734512
	E200 EASYPACK	1 - 200 µL	51.44 mm	1,000	F1739311	10,000	F1739312
	10 µL Empty Racks	-	-	1	F1732021	24	F1732022
GEL LOADING TIPS	200 µL Empty Racks	-	-	1	F1733021	24	F1733022
	300 µL Empty Racks	-	-	1	F1734021	24	F1734022
	1000 µL Empty Racks	-	-	1	F1735021	16	F1735022
	E10 Gel Loading Flat Tips	0.1 - 10 µL	45.72 mm	200	F1731181	800	F1731182
	E10 Gel Loading Round Tips	0.1 - 10 µL	45.72 mm	200	F1731281	800	F1731282
	E200 Gel Loading Flat Tips	1 - 200 µL	82.55 mm	200	F1733181	800	F1733182
	E200ST Sterilized Gel Loading Flat Tips	1 - 200 µL	82.55 mm	200	F1733381	800	F1733382
	E200 Gel Loading Round Tips	1 - 200 µL	82.55 mm	200	F1733281	800	F1733282
	E200ST Sterilized Gel Loading Round Tips	1 - 200 µL	82.55 mm	200	F1733481	800	F1733482



Certified Free - RNase/DNase, Human DNA, Pyrogens, PCR Inhibitors

Visit www.gilson.com

SHOP NOW

WIDE RANGE OF TIP PACKAGING

TIPACK™
 Filter, Autoclavable, Sterilized
 Uniquely designed TIPACK features a dual-purpose lid
 Hinged to easily open and close while using tips
 Pull it out of the hinges to set on top or discard for high-throughput tip usage



SHOP NOW

MEGAPACK
 Autoclavable, Sterilized
 Uses 70% less plastic
 Sterilized MEGAPACKS give you the choice to expose 96 tips at a time or 192
 Ideal for high throughput pipetting



SHOP NOW

EASYPACK
 Autoclavable
 Purchase in bulk and save money by simply reloading these tips into empty racks
 Resealable bags for easy access
 EASYPACK: 5 bags x 200 tips



SHOP NOW

TOWERPACK
 A quick, easy and affordable rack refill system
 Uses 60% less space on your bench and 70% less plastic than regular rack box
 One-hand system operation



SHOP NOW

Certified Contaminant Free

These tips are certified free of human DNA, RNases, DNases, PCR inhibitors, and pyrogens.

Gilson Universal Fit Tips

Designed to fit perfectly and provide the best results with Gilson pipettes, the universal design of PIPETMAN EXPERT Tips allows them to be used with most leading pipette brands. Additionally, because of the universal fit, PIPETMAN EXPERT Tips allow you to stock up on one brand of tips with practical packaging options, saving you time, money, and bench space.

Space Saving Environment Friendly Packaging

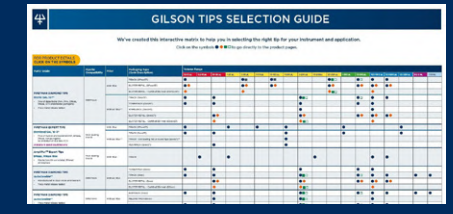
The Towerpack and MegaPack configurations allow labs to store more tips using less space on the bench. Less packaging material is used and the plastic is recyclable.

Gel Loading Tip Solutions

Receive maximum accuracy and the best possible results when using PIPETMAN EXPERT long, round tips and the specially patented flat gel loading tips.

Choose the Right Tip for Your Needs

From purity level to volume range, this handy interactive tip selection guide will help you find the perfect tip for your application. Download now to get a clear view of our entire pipette tips offering.



Tools and Resources
 Poster: [Tips Compatibility Charter](#)

Download Tip Selection Table

EXCELLENT FIT FILTER TIPS FOR MOLECULAR BIOLOGY APPLICATIONS

AmpliPur® Expert Tips are ISO 8655-compliant and provide a significant value for the money spent. They are manufactured according to certified quality standards, ensuring each tip is free of DNase and RNase. These filter tips protect precious samples from cross-contamination and are designed to fit various pipette brands.

Excellent Fit

AmpliPur Expert Tips are designed to fit various pipette brands for maximum convenience on the bench. Equipped with a filter, they also help prevent cross-contamination.

Ideal for Molecular Biology Applications

These tips significantly contribute to molecular testing performance by ensuring sample integrity during the pipetting process.

ISO 8655 Compliant

Manufactured according to the certified Gilson quality standard, AmpliPur Expert Tips comply with ISO 8655 requirements and are certified free of RNase and DNase, preserving your sample integrity.



Amplipur® Expert Tips			
Volume Range	Nominal Volume of Compatible Pipettes*	Qty/Commercial Unit (CU)	Part Number (Commercial Units)
0.5-10 µL	2 µL / 10 µL	960 (10 racks of 96 tips)	F174101
1-20 µL	20 µL	960 (10 racks of 96 tips)	F174201
10-200 µL	100 µL** / 200 µL / 300 µL	960 (10 racks of 96 tips)	F174301
100-1000 µL	1000 µL	960 (10 racks of 96 tips)	F174401
100-1200 µL	1000 µL / 1200 µL	960 (10 racks of 96 tips)	F174501

*Within ISO 8655 specifications.

**Compatible with many of 100 µL pipettes, except Gilson P100 single channel.

Tools and Resources

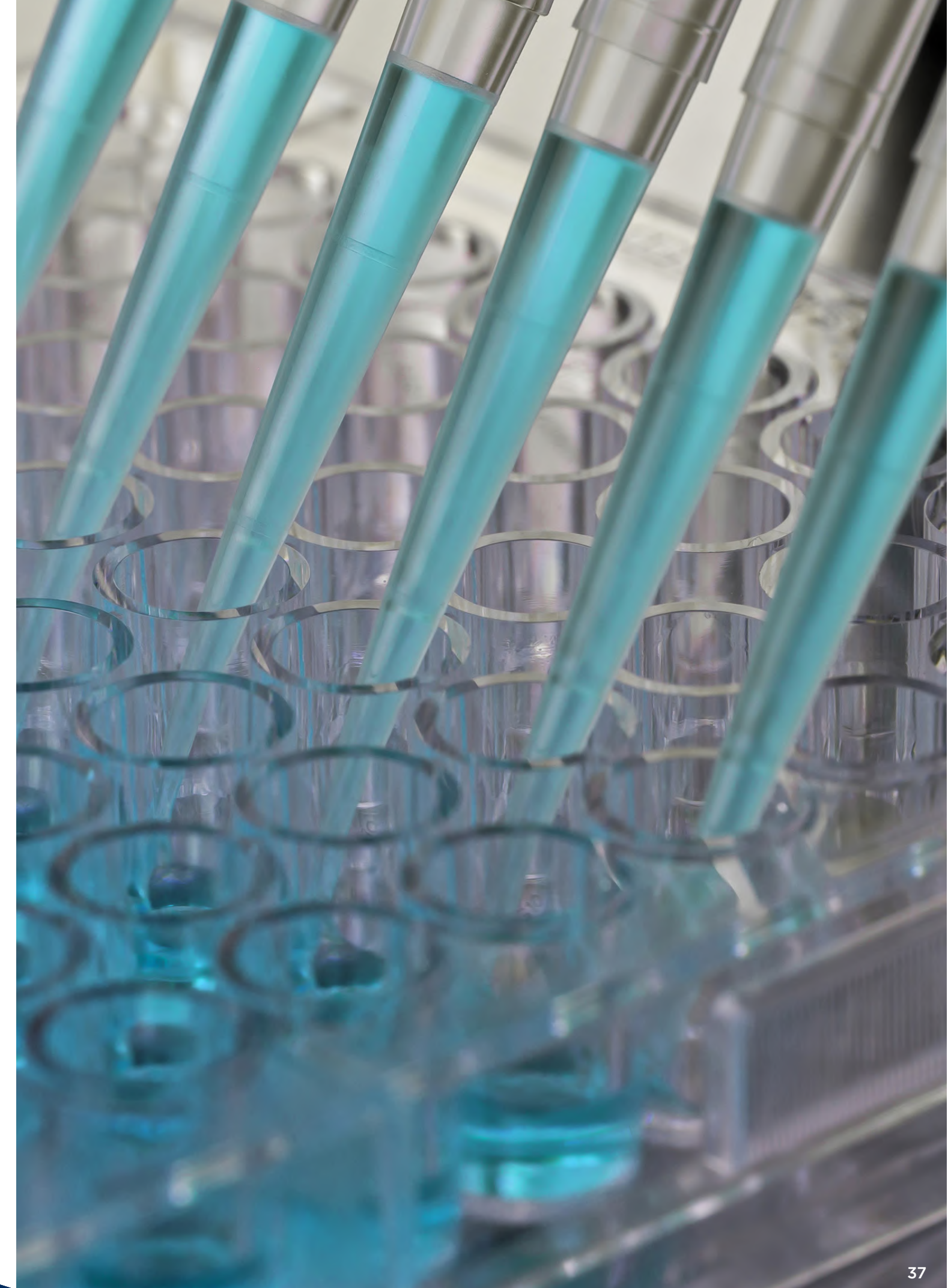
Poster: [Tips Compatibility Chart](#)

Choose the Right Tip for Your Needs

From purity level to volume range, this handy interactive tip selection guide will help you find the perfect tip for your application. Download now to get a clear view of our entire pipette tips offering.



[Download Tip Selection Table](#)



microman[®]

E

ERGONOMIC PIPETTING FOR NON-AQUEOUS LIQUIDS

MICROMAN[®] E positive-displacement pipettes, along with capillary pistons, offer the highest precision when ergonomically pipetting non-aqueous samples, such as viscous or volatile liquids. Capillary pistons eliminate the air cushion between the sample and disposable piston, ensuring the accuracy of the pipette is not affected by the physical properties of the sample.



Contamination-Free Pipetting

Minimize the potential for pipette, sample, and human contamination with MICROMAN E. Dispose of the capillary piston (CP) tip safely and without hand contact by simply pushing the push button until the last stop.

Reliable Results Even with Non-Aqueous Liquids

Whether a viscous, volatile, hot, or cold sample, MICROMAN E can handle the job with accuracy and precision. Have complete confidence in your results with the volume-control switch that reduces the risk of accidental volume change.

Triple Protection

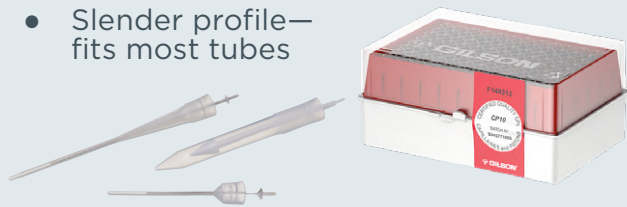
Positive-displacement technology is the ideal solution to prevent from aerosols contamination or sample carry-over, protecting the pipette, the user, and the sample.

Capillary Pistons

100% Protection Against Contamination

The disposable piston is located inside the capillary tip so users can be assured that no harmful samples will contaminate the pipette.

- No risk of chemical contamination
- Slender profile—fits most tubes



Watch MICROMAN[®] E in action



Watch Video

Volume-control switch

MICROMAN [®] E				
Model	Capillary Piston	Part Number	Nominal Volume (μL)	Volume Range (μL)
M10E	CP10 CP10ST	FD10001	10	1 - 10
M25E	CP25 CP25ST	FD10002	25	3 - 25
M50E	CP50 CP50ST	FD10003	50	20 - 50
M100E	CP100 CP100ST	FD10004	100	10 - 100
M250E	CP250 CP250ST	FD10005	250	50 - 250
M1000E	CP1000 CP1000ST	FD10006	1000	100 - 1000

Full range of accessories can be found on page 28.

SHOP NOW

Visit www.gilson.com

CAPILLARY PISTON							
Capillary Piston Model	Volume Range	MICROMAN [®] E Model Compatibility	CP Qty/ Rack	Rack Qty/ Commercial Unit	CP Qty/ Commercial Unit	Part Number	
TIPACK - Assembled CP	Capillary Piston 10 μL (CP10)	1 - 10 μL	M10E	96	2	192	F148412
	Capillary Piston 25 μL (CP25)	3 - 25 μL	M25E	96	10	960	F148312
	Capillary Piston 50 μL (CP50)	20 - 50 μL	M50E	96	10	960	F148013
	Capillary Piston 100 μL (CP100)	10 - 100 μL	M100E	96	2	192	F148414
	Capillary Piston 250 μL (CP250)	50 - 250 μL	M250E	96	10	960	F148014
	Capillary Piston 1000 μL (CP1000)	100 - 1000 μL	M1000E	91	2	182	F148560
TIPACK - Assembled Sterilized CP	Sterilized Capillary Piston 10 μL (CP10ST)	1 - 10 μL	M10E	96	2	192	F148413
	Sterilized Capillary Piston 25 μL (CP25ST)	3-25 μL	M25E	96	6	576	F148712
	Sterilized Capillary Piston 50 μL (CP50ST)	20 - 50 μL	M50E	96	6	576	F148713
	Sterilized Capillary Piston 100 μL (CP100ST)	10 - 100 μL	M100E	96	2	192	F148415
	Sterilized Capillary Piston 250 μL (CP250ST)	50-250 μL	M250E	96	10	960	F148315
	Sterilized Capillary Piston 1000 μL (CP1000ST)	100 - 1000 μL	M1000E	91	2	182	F148714

Tools and Resources

Specsheet: [Pipette Specifications](#)

Guide to Pipetting: [Tips from Our Experts](#)

Gilson Learning Hub Articles: [How Positive-Displacement Pipettes Help to Improve Your Results](#)



Benefit from a special care with our [flexible, tiered service level offerings](#), tailored to fit your lab's needs, while increasing the lifespan of your pipettes.

SHOP NOW

Visit www.gilson.com

distriman®

FASTER MULTIPLE DISPENSING

DISTRIMAN® is a positive-displacement, continuously adjustable, repetitive pipette with direct read out designed to simplify multiple dispensing when used with DISTRITIPS syringes. With DISTRIMAN, you can dispense the exact volume required for any protocol, even fractional volumes. It is ideal for repetitive dispensing in clinical, hospital, biological, chemical, food and beverage, pharmaceutical, cosmetics, and forensics labs.



Simplifies Multiple Dispensing

Dispense exact volumes without tedious calculations and ensure optimal pipetting results even with volatile or viscous liquids.

An Economical Solution

DISTRIMAN covers a large volume range with only three DISTRITIPS syringes, making it very economical. DISTRITIPS are available in standard or pre-sterilized form (boxes of 50).

DISTRIMAN is the only continuously adjustable mechanical repetitive pipette with direct volume readout available on the market.

DISTRITIPS*			
DISTRITIPS (Pack of 50)	Aliquot Range	Part Number	Volume Range (µL)
125 µL Micro Pre-Sterile*	1-12.5 µL	F164100 F164130	2-10
1250 µL Mini Mini Pre-Sterile*	10-125 µL	F164110 F164140	20-100
12.5 mL Maxi Maxi Pre-Sterile*	0.1-1.25 mL	F164120 F164150	200-1000

DISTRIMAN*	
Description	Part Number
DISTRIMAN (1 µL to 1.25 mL)	F164001



CV means Coefficient of Variation (%)
*Pre-sterile refers to sterility assurance level between SAL10⁻² and SAL10⁻³ (individually wrapped).

Tools and Resources

Specsheet: Pipette Specifications

Guide to Pipetting: Tips from Our Experts

Visit www.gilson.com **SHOP NOW**

repet-tips

REPET-TIPS FOR MOTORIZED REPETITIVE DISPENSING SOLUTION

Specifically made for the REPETMAN® positive-displacement electronic pipette, the REPET-TIPS® cover volumes from 0.1 to 50 mL, in either sterile or non-sterile formats as well as adaptors for 25 and 50 mL tips. The tip-size encoding system of the REPETMAN* automatically identifies the REPET-TIP when placed on the pipette, and displays the appropriate volume on the LCD screen.



For the 25 and 50 mL sizes, a special adaptor is used that is supplied with the tips.

The adaptors are also available separately, non-sterile (Part No. F164591) and sterile (Part No. F164592).

REPET-TIPS are not available in the United States.

***Repetman is no longer available for selling.**

REPET-TIPS					
REPET-TIPS	Non-Sterile	Sterile*	REPET-TIPS	Non-Sterile	Sterile*
Repet-Tip (0.1 mL, box of 100)	F164510	F164515	Repet-Tip (10.0 mL, box of 100)	F164557	F164558
Repet-Tip (0.5 mL, box of 100)	F164520	F164525	Repet-Tip (12.5 mL, box of 100)	F164560	F164565
Repet-Tip (1.0 mL, box of 100)	F164527	F164528	Repet-Tip (25 mL, box of 50)**	F164570	-
Repet-Tip (1.25 mL, box of 100)	F164530	F164535	Repet-Tip (25 mL, box of 25)**	-	F164575
Repet-Tip (2.5 mL, box of 100)	F164540	F164545	Repet-Tip (50 mL, box of 25)**	F164580	F164585
Repet-Tip (5.0 mL, box of 100)	F164550	F164555	Adapter for 25/50 mL Repet-Tip (set of 10)	F164591	-
* Sterile / Endotoxin-free (less than 0.01 I.U./mL)			Adapter for 25/50 mL Repet-Tip (set of 5)	-	F164592
** One autoclavable adapter is provided in each box					

REPET-TIPS can fit motorized repetitive dispensers from other brands. Please contact your local Gilson representative for more information.

SHOP NOW Visit www.gilson.com

macroman®

THE EFFICIENT SOLUTION FOR PIPETTING UP TO 100 MILLILITERS AT ONCE

MACROMAN is a reliable pipette controller which can be used with glass and plastic serological pipettes from 1 to 100 mL, with a total volume range from 0.1 to 100 mL.



Optimal Speed Control

The aspirating and dispensing speed can be set using pressure sensitive triggers while pipetting. A maximum speed can be set by using the thumbwheel to prevent from over aspiration. The speed is adjustable up to 25 mL in less than three seconds.

The screen continuously displays battery status as well as the aspiration and dispensing speed setting.

Comfortable Use

Prevent hand fatigue with MACROMAN's ergonomic handle featuring wide triggers for maximum comfort and stress-free pipetting.

The Lithium-Ion battery enables a longer, vibration-free use with more than 10h of autonomy.

Increase precision by choosing your flow rate mode from slow drops to rapid dispensing.

All stands are included with MACROMAN for stable and easy storage on the bench.

MACROMAN®		
Description	Volume Range	Part Number
MACROMAN	0.1 to 100 mL	F110120

MACROMAN ACCESSORIES			
Description	Part Number	Description	Part Number
Charging desk stand	F107200	Filter, 0.45 µm, sterile (set of 10)	F107207
Wall mount	F107201	Power supply	F107203
Magnetic wall mount	F107202	Lithium-Ion battery	F107208
Filter, 0.22 µm, standard (set of 10)	F107204	Nosepiece	F107209
Filter, 0.22 µm, sterile (set of 10)	F107205	Adjustable side stand	F107210
Filter, 0.45 µm, standard (set of 10)	F107206	Pipette adaptor	F107211

 **SHOP NOW**

Visit www.gilson.com

The side stand allows the MACROMAN to be set down quickly between pipetting operations, preventing from contamination of the serological pipette or benchtop.



serological

PIPETTES

OPTIMIZED PIPETTING CONTROL

Ideal for scientists who need to easily and quickly transfer liquid aliquots from one container to another with precision, the Gilson disposable plastic serological pipettes are perfect for use with MACROMAN® to help you in your daily cell-culture, molecular biology, and microbiology applications.

Reliable

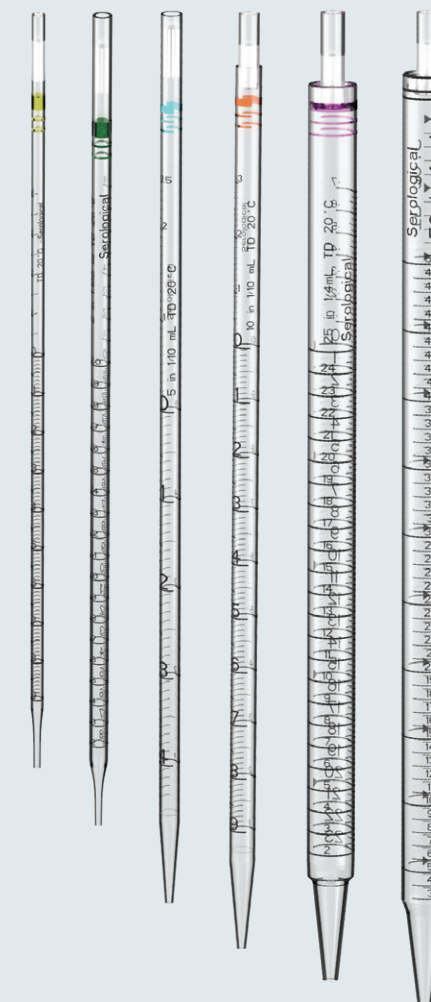
Gilson serological pipettes are made with USP Class VI polystyrene and are free of contaminants that can alter your experiment. They are gamma-sterilized, non-pyrogenic, and certified free of detectable RNase/DNase. The polyester fiber plug provides a high level of protection against over-pipetting and contamination by liquids and aerosols.

Easy Volume Control

Our serological pipettes offer precise volume control and have color-coded rings for easy size identification, as well as dark ascending and descending graduations so you can easily read the aspirated and dispensed volumes. They also have negative graduations for extra capacity.

Flexible

Available in models ranging from 1 to 50 mL, these serological pipettes are recommended for use with MACROMAN but can also be used with any pipette controller. They enable precise and convenient dispensing of different kinds of liquids for a variety of tasks.



SEROLOGICAL PIPETTES

Description	Qty/ Case	Part Number	Volume	Ring
Serological Pipettes - Sterile Bags				
40 sterile bags of 25 units	1000	F110121	1 mL	Yellow
	1000	F110123	2 mL	Green
20 sterile bags of 25 units	500	F110125	5 mL	Blue
	500	F110127	10 mL	Red
10 sterile bags of 20 units	200	F110129	25 mL	Purple
Serological Pipettes - Sterile Individually Wrapped				
10 bags of 100 sterile, individually wrapped units	1000	F110122	1 mL	Yellow
	1000	F110124	2 mL	Green
4 bags of 50 sterile, individually wrapped units	200	F110126	5 mL	Blue
	200	F110128	10 mL	Red
	200	F110130	25 mL	Purple
4 bags of 25 sterile, individually wrapped units	100	F110131	50 mL	Black

 **SHOP NOW**

Visit www.gilson.com

platemaster®

FAST MICROPLATE PIPETTING

PLATEMASTER® is an easy-to-use solution for high throughput pipetting of 96- and 384-well microplates.



Save Time and Increase Your Productivity

The PLATEMASTER's 96-channel design greatly reduces the number of pipetting steps necessary to fill a microplate when compared to using regular manual multichannel pipettes. When using PLATEMASTER, the time it takes to fill 96-well plates is significantly reduced to approximately 10-20 seconds or less, and 384-wells can typically be filled in less than a minute using only four pipetting steps.

Simplifies Sample Prep

Using PLATEMASTER for higher throughput applications reduces the risk of human error. In a single motion, accuracy and precision levels can equal that of an 8- or 12-channel pipette, while avoiding the risk of skipping or repeating wells. Additionally, all enzymatic reactions and cell-based applications across all wells can be started and stopped at the same time. From 0.5 µL to 220 µL pipetting volumes, expect improved well-to-well and plate-to-plate reproducibility.

Convenient for any Microplate Application

PLATEMASTER is as intuitive as a PIPETMAN® and does not require programming, long training, or power for use. Through a variety of accessories, such as adapters for loading 384-well microplates, reagent reservoirs, or sample heater blocks, PLATEMASTER can be fully adapted to a variety of application needs. Its compact and portable design easily integrates into the lab, allowing it to fit on most benchtops, under hoods, or in cold rooms.

Watch PLATEMASTER in action



[Watch Video](#)



PLATEMASTER®					
Model	PIPETMAN® DIAMOND Tips			Part Number	Volume Range (µL)
P20	D200 DS200**	D200ST DS200ST**	DF100ST DF200ST DFS200ST**	F110761	0.5-20
P220	D200 DS200* D300	D200ST	DF200ST DFS200ST** DF300ST	F110762	2-220

*Validated for use with 384-well plates | ** Can pipette up to 200 µL only

PLATEMASTER® ACCESSORIES

Description	Part Number
384-well adapter, positioned by wheel	F1077602
384-well adapter, positioned by hand	F1077603
Alu-heater block for PLATEMASTER, 96 x 0.2 mL, for PCR tubes, stripes, and PCR plates Ø 7.8 mm	F1077604
Pipetting head height adjusters (2 units)	F1077605
Lubrication box of O-rings PLATEMASTER	F1077606
AmpliPur® Expert Tips Pin-plate Assembly for PLATEMASTER®	F110765
AmpliPur® Expert Tips Reload Block (pack of 2) for PLATEMASTER®	F110766



Tools and Resources

[Specsheet: Pipette Specifications](#)



[SHOP NOW](#)

Visit www.gilson.com



MAXIMIZE REPRODUCIBILITY OF YOUR BIOLOGICAL SAMPLE PREP

Increase reproducibility and the pace of your experiments with this easy-to-use, affordable, and automated liquid handling platform.



Upgrade to Automation for Reliable, Accurate Pipetting

Protect your important samples from procedural errors and maximize accuracy and precision with fully automated pipetting protocols utilizing PIPETMAN® technology.

Free Yourself from Tedious Sample Prep Work

Let PIPETMAX® prepare samples for you! Enjoy more freedom away from the bench and focus on what's important—your next discovery.

Stay Flexible—For Now And For The Future

Using any reagent or kit, adapt your pipetting protocols to meet the unique needs of your research.

PIPETMAN Inside

With PIPETMAN technology inside, you can trust your pipetting to be reliable and consistent plate-to-plate, lot-to-lot, and time-after-time.

Watch PIPETMAX in action



Watch Video



TRILUTION® micro Software

TRILUTION micro Software is an easy-to-learn software package for PIPETMAX, which streamlines steps for runtime workflows. The qPCR Assistant and Normalization Assistant add-ons automate repetitive steps, tedious calculations, and sample tracking, improving reliability and traceability for PCR/qPCR and normalization runs.

PIPETMAX®

Specification	Description
Removable Tray Capacity	Two options: 9-position removable tray (microplate footprints, but not for 384-well microplates) 9-position removable tray for 384-well microplates
Control	Touchscreen tablet or PC control via USB and TRILUTION® micro software
Pipette Head Options	Eight channel 1 µL - 20 µL Eight channel 20 µL - 200 µL Four channel 100µL - 1200µL Single channel 1000 µL
Pipette Head Mounts	Two PIPETMAX pipetting heads
Labware Compatibility	Standard shallow- and deep-well microplates and microcentrifuge tubes
Dimensions (W x D x H)	PIPETMAX with rotating cover 54.4 x 65.5 x 53.1 cm (21.4 x 25.8 x 20.9 in)
	PIPETMAX with rotating cover installed on optional riser assembly for off-bed tip disposal 54.4 x 65.5 x 69.6 cm (21.4 x 25.8 x 27.4 in)
	PIPETMAX without cover 50.8 x 64.3 x 49.5 cm (20 x 25.3 x 19.5 in)
	PIPETMAX without rotating cover installed on optional riser assembly for off-bed tip disposal 52.3 x 65 x 65.8 cm (20.6 x 25.6 x 25.9 in)
Environmental Conditions	Indoor use Altitude: up to 2000 m Temperature range: 5°C-40°C Humidity: Maximum relative humidity 80% for temperatures up to 31°C, decreasing linearly to 50% relative humidity at 40°C

ACCESSORIES

Part Number	Description
FC10022	PIPETMAX MAX8X20 Pipette Head
FC10021	PIPETMAX MAX8X200 Pipette Head
FC10023	PIPETMAX MAX4x1200 Pipette Head
32000391	PIPETMAX D1200 Tip Reload Box
32000274	Tip Disposal Bin
32000177	PIPETMAX Riser Off-Bed Tip Disposal
32000340	TRILUTION micro V3 for PC
32000341	PIPETMAX Standard V3 Tablet Kit



Application Notes : PIPETMAX Learning Hub



SHOP NOW

Visit www.gilson.com

safe aspiration

STATION

QUICK AND EASY ASPIRATION OF LIQUID WASTE

The Safe Aspiration Station is a stand-alone motorized vacuum unit, ideal for cell culture, ELISA tests, and liquid waste disposal. The closed unit is designed to prevent contamination hazards, and all parts in contact with liquids are fully autoclavable. Associated with the Safe Aspiration Kit, which includes a set of different adapters, the Safe Aspiration Station is easy to use on a bench or in laminar flow cabinets.

Safe and Contamination-Free

The station is equipped with a 4-liter Polypropylene (PP) bottle, a level detection system to prevent liquid overflow, and an in-line hydrophobic filter that traps aerosols for safe disposal of contaminated or hazardous liquids.

Adaptable and Convenient

The station also ensures an adjustable aspiration level indicated by a board of LEDs.

The choice of the adapter and the easy setting of the vacuum level enable quick and accurate aspiration of liquids from a variety of vessels.

The ergonomic hand operator can be stored on the bottle handle. The Safe Aspiration Kit also contains a stand with storing gaps for the adapters and the hand operator to help your workspace remain clean and organized.



Watch Safe Aspiration Station in action

Convenient

Safe aspiration of liquid waste

Various applications:

- Cell culture
- Immunology (ELISA)
- Liquid and solvent elimination
- Disposal in biochemistry labs

[Watch Video](#)

[Tools and Resources](#)

[Specsheet: Safe Aspiration Station Specifications](#)

SAFE ASPIRATION STATION	
Description	Part Number
Safe Aspiration Station, EU Plug	F110744
Safe Aspiration Station, UK Plug	F110746
Safe Aspiration Station, AU Plug	F110747
Safe Aspiration Station, JP Plug	F110748
Safe Aspiration Station, US Plug	F110745
Safe Aspiration Station, CN Plug	F110749

SAFE ASPIRATION KIT	
Description	Part Number
Safe Aspiration Kit	F110750

Visit www.gilson.com

[SHOP NOW](#)

dispensman®

DISPENSE LIQUIDS SIMPLY AND ACCURATELY

DISPENSAN® is a bottle-top dispenser for convenient, safe, and precise delivery of common laboratory solutions and solvents. Its innovative, three-position nozzle controls the dispensing of liquids, the removal of air in the system to avoid liquid loss, and includes an anti-drip safety feature that returns liquid to the bottle.



Precise

Dispense just the liquid needed every time with a quick, easy, and precise volume setting.

No Loss of Liquid

Prime your operation by purging the air in RECYCLE position keeping the liquid inside the bottle and avoiding any loss of liquid.

Safe

Keep your bench and other devices safe with the anti-drip system and the return of liquid into the bottle after use.

Flexible

- Numerous bottle adaptors
- Adaptable to every type of liquid with an easy calibration by the user
- Fully autoclavable at 121°C
- Convenient 3-position nozzle



DISPENSAN®			
Model	Part Number	Volume Range (mL)	Scaling (mL)
DISPENSAN 2.5 mL	F110101	0.25-2.5 mL	0.05
DISPENSAN 5.0 mL	F110102	0.5-5 mL	0.10
DISPENSAN 10 mL	F110103	1-10 mL	0.20
DISPENSAN 25 mL	F110104	2.5-25 mL	0.50
DISPENSAN 50 mL	F110105	5-50 mL	1.00

[Tools and Resources](#)

[Specsheet: Pipette Specifications](#)

[Specsheet: DISPENSAN Chemical Compatibility Chart](#)

[Guide to Pipetting: Tips from Our Experts](#)

[SHOP NOW](#)

Visit www.gilson.com

trackman®

GUIDING YOU TO SUCCESS

Get on track and stay on track as you pipette flawlessly from one microplate to another with the help of TRACKMAN®.

Secure Your Results

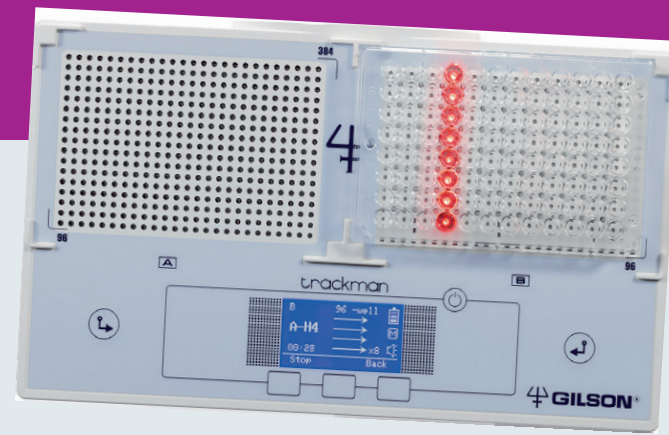
TRACKMAN simplifies your work, improves your productivity, and helps eliminate pipetting errors and cross-contamination.

Versatile Performance

The LED lights on TRACKMAN help you place your 96- and 384-well microplates in the correct position on the light panel, while fixed notches secure your plates firmly in place.

Complete Your Equipment

Expand the functionality of your TRACKMAN with the versatile microtube-holder to transfer liquids from one microtube to another (0.5 mL, 1.5 mL, and 2 mL).



TRACKMAN®	
Description	Part Number
TRACKMAN	F70301

TRACKMAN ACCESSORIES	
Description	Part Number
Microtube Holder	F70105
Pedal for TRACKMAN	F70261

SHOP NOW Visit www.gilson.com

digital dry bath

SERIES

UNIFORM TEMPERATURE DELIVERY FOR A VARIETY OF TUBE SIZES

The compact Digital Dry Bath Series delivers precise temperatures to your samples using digital temperature and time controls with built-in calibration functionality, improving reliability and reproducibility. The aluminum blocks (sold separately) accommodate tubes from 0.5–50 mL. Custom blocks are available.



DIGITAL DRY BATH SERIES					
One-Block Digital Dry Bath		Two-Block Digital Dry Bath		Four-Block Digital Dry Bath	
Description	Part Number	Description	Part Number	Description	Part Number
One-Block Digital Dry Bath 115V, US Plug	36110300	Two-Block Digital Dry Bath 115V, US Plug	36110400	Four-Block Digital Dry Bath 115V, US Plug	36110500
One-Block Digital Dry Bath, 230V, EU Plug	36110310	Two-Block Digital Dry Bath, 230V, EU Plug	36110410	Four-Block Digital Dry Bath, 230V, EU Plug	36110510
One-Block Digital Dry Bath, 230V, UK Plug	36110320	Two-Block Digital Dry Bath, 230V, UK Plug	36110420	Four-Block Digital Dry Bath, 230V, UK Plug	36110520

SHOP NOW

Visit www.gilson.com

roto-mini

PLUS

FLEXIBLE VARIABLE SPEED ROTATOR FOR A RANGE OF APPLICATIONS

With speeds from 5–70 rpm, the Roto-Mini Plus variable speed rotator offers three operational mixing modes (Mix, Pause, and Rock) and accommodates standard tube sizes from 0.5–50 mL, making it a flexible addition to any lab.



ROTO-MINI PLUS	
Description	Part Number
Roto-Mini Plus with tube holders, 115V, US Plug	36110100
Roto-Mini Plus with tube holders, 230V, EU Plug	36110110
Roto-Mini Plus with tube holders, 230V, UK plug	36110120

Visit www.gilson.com

SHOP NOW

mini vortex

MIXER

SMALL SIZE, POWERFUL MIXING

With touch-activated operation, the Mini Vortex Mixer delivers a fixed speed of 2,800 rpm for mixing tubes up to 50 mL. The entire operation is quiet, smooth, and contained in a small footprint.

MINI VORTEX MIXER	
Description	Part Number
Mini Vortex Mixer, 100–240V, US Plug	36110700
Mini Vortex Mixer, 100–240V, EU Plug	36110710
Mini Vortex Mixer, 100–240V, UK Plug	36110720

Visit www.gilson.com

SHOP NOW



vortex

MIXER

MAXIMIZE MIXING, MINIMIZE NOISE, AND VIBRATION

With a unique counter-balance system, the powerful Vortex Mixer offers instant vortex mixing without noise and vibration. The mixer features both touch and continuous operation with speeds from 200–3,200 rpm and can be used in a range of temperature environments (+4–65°C). Several optional mixing heads are available.

VORTEX MIXER	
Description	Part Number
Vortex Mixer with standard cup head, 115V, US Plug	36110740
Vortex Mixer with standard cup head, 230V, EU Plug	36110750
Vortex Mixer with standard cup head, 230V, UK Plug	36110760

ACCESSORIES	
Description	Part Number
Vortexer Flat head	36117310
COMBO™ Head	36117320
Optional Foam Rack for 12 x 15mL tubes	36117330
Optional Foam Rack for 5 x 50 mL tubes	36117340
Horizontal Head, for 12 x 1.5 mL	36117350
Horizontal Head, for 4 x 15 mL	36117360
Horizontal Head, for 2 x 50 mL	36117370



Visit www.gilson.com

SHOP NOW

digital mini

INCUBATOR

SELF-CONTAINED TEMPERATURE CONTROLS IMPROVE INCUBATION ACCURACY

Using digital temperature controls, the Digital Mini Incubator allows you to accurately set the internal temperature without an external thermometer. The compact incubator accommodates 2 L flasks and has a built-in internal universal outlet for other electrical connections. Models for heating only or heating and cooling are available.

Two Models are Available:

- Heat only—temperature range of 5°C above ambient to 60°C
- Heat and cooling—temperature range of 15°C below ambient to 60°C*

DIGITAL MINI INCUBATOR	
Description	Part Number
Digital Mini Incubator, with heating only 100–230V US Plug	36110800
Digital Mini Incubator, with heating only 100–230V, EU Plug	36110810
Digital Mini Incubator, with heating only 100–230V, UK Plug	36110820
Digital Mini Incubator, with heating and cooling 100–230V, US Plug	36110840
Digital Mini Incubator, with heating and cooling 100–230V, EU Plug	36110850
Digital Mini Incubator, with heating and cooling 100–230V, UK Plug	36110860

ACCESSORY	
Description	Part Number
Extra Shelf 10.5 x 8"	36117380



SHOP NOW

Visit www.gilson.com

* Minimum temperature is approx. 7°C in 22°C room temp.

centry™

103

QUICK AND SAFE SAMPLE CENTRIFUGATION

The CENTRY™ 103 Minicentrifuge is an easy-to-use and portable benchtop device ideal for the quick separation of particles from a supernatant. It also enables a quick spin down of a drop of liquid from the walls of microtubes.



Reliable and Safe

The CENTRY 103 Minicentrifuge integrates several safety features: it automatically stops after six minutes of continuous spinning, opening the lid anytime engages the brake, a pinch-type connector tightly secures the rotor, and a red light indicates when the power is switched on.

User-Friendly

Thanks to its ergonomic design, small footprint, and optional battery control, the CENTRY 103 Minicentrifuge can be used anywhere. The quick and easy starting and ending operations are controlled by pressing down on the lid.

The CENTRY 103 Minicentrifuge promptly reaches a fixed speed of 6,000 rpm, without adjustment. This minicentrifuge comes with two high-quality, easy-to-change rotors that can be used with microtubes or tube strips. The round rotor has a capacity of eight 1.5 mL or 2 mL microtubes, and the rectangular-shaped rotor has a capacity of two lines of eight connected 0.2 mL tube strips.

Watch CENTRY 103 Minicentrifuge in action



Watch Video

CENTRY™ 103 MINICENTRIFUGE

Description	Part Number
CENTRY 103 Minicentrifuge (Universal Plug)	F110736

Tools and Resources

Specsheet: Centry 103 Minicentrifuge Specifications

Visit www.gilson.com

SHOP NOW

centry™

117

IMPROVED TEMPERATURE STABILITY KEEPS SAMPLES SAFE

Reaching speeds of up to 13,500 rpm, the CENTRY™ 117 Microcentrifuge has an easy-to-use touchscreen and built-in timer and offers one-button recall of up to nine stored custom run programs. Its proprietary air-flow system ensures temperature stability, preserving sample integrity on extended runs. The rotor design accommodates either 1.5–2.0 mL tubes or PCR strips.



CENTRY™ 117 MICROCENTRIFUGE

Description	Part Number
CENTRY 117 Microcentrifuge, 115V, US Plug	36110200
CENTRY 117 Microcentrifuge, 230V, EU Plug	36110210
CENTRY 117 Microcentrifuge, 230V, UK Plug	36110220

Visit www.gilson.com

SHOP NOW

centry™

101

NO MORE SPILLS WITH SPECIAL ROTOR DESIGN

With its patented swing-out rotor design, the CENTRY™ 101 Plate Centrifuge prevents microplate contents from spilling, increasing the reliability of your reactions. The two-plate capacity centrifuge accepts most popular PCR plates and microplates and easily fits into hoods and on crowded benchtops.



CENTRY™ 101 PLATE CENTRIFUGE

Description	Part Number
CENTRY 101 Plate Centrifuge, 115V, US Plug	36117390
CENTRY 101 Plate Centrifuge, 230V, EU Plug	36117400
CENTRY 101 Plate Centrifuge, 230V, UK Plug	36117410

Visit www.gilson.com

SHOP NOW

The compact MINIPULS® 3 Peristaltic Pump is a high-performance, low-pulse, peristaltic pump with interchangeable pump heads for delivering a variety of liquids—from biological to chemical. Six different channel and flow rate configurations are available.



Low-Pulse Liquid Transfer

Utilizing positive-displacement pump technology, liquid flows nearly pulse-free as a result of ten stainless steel rollers. MINIPULS 3 produces smooth flows with excellent accuracy and precision, even at high flow rates.

Flow Rates to Meet Your Needs

With a choice of six quickly interchangeable pump heads, you'll have a wide range of flow rates to use for your applications.

- Four standard models (1, 2, 4, or 8 channels):
0.3 µL/min to 30 mL/min
- Two high flow models (2 or 4 channels):
1 mL/min to 220 mL/min

Easy to Operate

MINIPULS 3 is easy to install, simple to operate, and easy to maintain. With a simple keypad control and easy-to-read LCD screen, start/stop, flow direction, increase/decrease flow rate, and prime functions are easily accessible. Remote start/stop is also possible.

Select the Right Tubing

The most suitable material according to your sample's chemical compatibility.

- Contains a large variety of internal diameters to reach desired flow rates.
- Features appropriate connectors and extension tubing.

Visit www.gilson.com

SHOP NOW

TUBING FOR R1, R2, R4, R8, PUMP HEADS Length = Approximately 40 cm (16 in.)						
Material	Internal Diameter (mm)	Reference Tubing (Calibrated Tubing)	Color Coded Stops	Extension Tubing 3 m (118 in.)	Connectors	Maximum Flow Rate (mL/min)
PVC	0.25	F117932	● ●	F117952	F117985	0.4
	0.38	F117933	● ●	F117953	F117986	0.7
	0.51	F117934	● ●	F117954	F117986	1.4
	0.76	F117936	● ●	F117956	F117987	2.1
	1.02	F117938	○ ○	F117958	F1179941	4.1
	1.30	F117940	○ ○	F117960	F1179941	6.2
	1.52	F117942	● ●	F117962	F1179941	9.1
	1.65	F117943	● ●	F117963	F1179941	10.5
	2.06	F117945	● ●	F117965	F1179941	15.7
	2.29	F117946	● ●	F117966	F1179941	19.7
Iso-Versinic® or Viton®	2.79	F117948	● ●	F117968	F1179951	23.2
	3.18	F117949	● ●	F117969	F1179951	29.0
	0.5	F1817741	● ●	F117740	F117986	1.8
	1.0	F1817743	● ●	F117742	F1179941	4.0
Silicone	2.0	F1817745	● ●	F117744	F1179941	12.6
	3.0	F117747	● ●	F117746	F1179951	27.3
	4	F117749	● ●	F117748	-	33.0
	0.64	F1825111	● ●	F1825131	F117987	1.5
Santoprene™ or PharMed®	1.02	F1825112	○ ○	F1825132	F1179941	4.1
	2.06	F1825113	● ●	F1825133	F1179951	14.7
	2.79	F1825114	● ●	F117975	F1179951	22.8
Santoprene™ or PharMed®	0.51	F1825101	● ●	F1825121	F117986	1.4
	1.02	F1825102	○ ○	F1825122	F1179941	4.8
	2.06	F1825103	● ●	F1825123	F1179941	15.0

TUBING FOR R2HF & R4HF HIGH FLOWPUMP HEADS Length = 3 m (118 in.)			
Material	Internal Diameter (mm)	Reference Tubing (Calibrated Tubing)	Maximum Flow Rate (mL/min)
PVC	2.06	F117965	24
	2.29	F117966	29
	2.79	F117968	41
	3.16	F117969	49
	4.0	F117970	75
	5.0	F117980	113
	6.0	F117981	163
Iso-Versinic® or Viton®	8.0	F117982	213
	2.0	F117744	23
	3.0	F117746	48
Silicone	4.0	F117748	86
	6.0	F117750	181
	2.0	F1825133	25
	3.0	F117975	44
Santoprene™ or PharMed®	4.0	F117976	71
	5.0	F117977	115
	6.0	F117978	150
	7.0	F117979	220
Santoprene™ or PharMed®	2.0	F1825123	25
	3.2	F1825124	53
	6.4	F1825125	171



MINIPULS 3			
Description	Part Number	Maximum Flow Rate	Number of Channels
Pump Module MINIPULS 3	F155001	-	-
R1 Pump Head	F117604	up to 30 mL/min	1
R2 Pump Head	F117800	up to 30 mL/min	2
R4 Pump Head	F117606	up to 30 mL/min	4
R8 Pump Head	F117608	up to 30 mL/min	8
R2/HF Pump Head (High Flow)	F117830	up to 220 mL/min	2
R4/HF Pump Head (High Flow)	F117831	up to 220 mL/min	4

Tools and Resources

Technote: Milk Testing of Lipolysis and Protein Matter

Technote: TN222 Autosampler for Spectrophotometric Analysis

FRACTION COLLECTORS

IDEAL SOLUTIONS FOR SMALL TO LARGE CAPACITY COLLECTION

Gilson offers advanced solutions for fraction collection from small-footprint to large capacity models. The collectors accommodate a wide variety of collection vessels, including microplates, vials, and tubes. The built-in, easy-to-use keypad makes setup and operation simple. The fraction collectors can be used standalone or controlled by TRILUTION® LC software. The compact size fits most fume hoods to protect you from hazardous materials.

Powerful Fraction Collection Capabilities

Multiple Fraction Collection possibilities:

Collection Mode	Without Diverter Valve	With Diverter Valve
Time	X	X
Drop	X	X
Peak		X
Time Windows		X

- The 3-way diverter valve allows to divert column void volumes, peaks of no interest, and equilibration volumes to a waste vessel.
- Easy integration into any system due to multiple Input/Output contacts connection, making them the preferred choice for a range of separation applications such as FPLC, FLASH chromatography, or HPLC.
- Optional multicolumn adapters are available for parallel collection from multiple channels.



SELECTION GUIDE

FC 203B
Fraction Collector



The FC 203B Fraction Collector is commonly configured with a MINIPULS 3 for low pressure chromatography or any fractionation system.

- Holds one rack to perform
 - Up to 128 fractions (12x75mm tubes)
 - Up to 105 fractions (13x100mm tubes)
 - One shallow- or deep-well microplate
- Available with and without diverter valve
- Optional multicolumn adapter to collect from up to 8 separate channels in parallel

FC 203B Fraction Collector	
Description	Part Number
FC 203B, 110/220 V	171011
FC203B with 3-way valve	171011DV

Tools and Resources

Specsheet: FC 203B and FC 204 Fraction Collectors Time Drop or Peak Collection to Suit Virtually Any LC Application

[REQUEST A QUOTE](#)

FC 204
Fraction Collector



The FC 204 Fraction Collector is ideal for collecting fractions from a liquid chromatography system from analytical to preparative flow rates. Associated with a peristaltic pump, it can offer a quick installed and low-cost tubing filling system with a small footprint for use in biosafety cabinets with an easy-to-sterilize flow path for minimized contamination.

- Holds four racks to collect
 - Up to 240 fractions (13x100mm tubes)
 - Up to 176 fractions (18x180mm tubes)
 - Up to eight shallow or deep-well microplates
- Available with a 3-way diverter valve for flow up to 20 mL/min or for flow up to 200 mL/min
- Optional multicolumn adapter allows for collection from up to 18 separate channels in parallel

FC 204 Fraction Collector	
Description	Part Number
FC 204, 110/220 V	171041
FC 204, 110/220V, 200ML/MIN	171043

Tools and Resources

Specsheet: FC 203B and FC 204 Fraction Collectors Time Drop or Peak Collection to Suit Virtually Any LC Application

[REQUEST A QUOTE](#)

LIQUID HANDLERS

Gilson liquid handling tools deliver the precise control you need for sample and reagent volume transfers, ensuring reproducible results while making life in the lab easier. Beginning with the legendary PIPETMAN® technology, our liquid handling tools have evolved with your needs. We offer completely automated liquid handling systems.

SELECTION GUIDE

GX-241 Liquid Handler		<p>The GX-241 Liquid Handler offers a two-rack platform for large or small volume injection and automatic fraction collection using tubes, vials, or microplates. Its small footprint makes it an ideal choice for labs where bench space is limited.</p> <p>Learn more</p>
GX-271 Liquid Handler		<p>The GX-271 Liquid Handler offers a small footprint, medium capacity liquid handler and autosampler offers small-to-large volume injection, fraction collection, and liquid handling capabilities.</p> <p>Its optional dynamic syringeless pumping system is capable of delivering microliters to hundreds of milliliters, with no change in hardware.</p> <p>Learn more</p>
GX-274 Liquid Handler		<p>The GX-274 Liquid Handler increases the throughput and efficiency of liquid transfers, serial dilutions, and other common tasks by processing up to four samples in parallel.</p> <p>Learn more</p>
GX-281 Liquid Handler		<p>This GX-281 Liquid Handler provides a versatile, large capacity platform that can be configured for injection, fraction collection, and re-injection as part of a semi-preparative or preparative HPLC purification system. With optional accessories, it can also be used as a flexible liquid handler for performing a wide variety of automated, unattended liquid handling applications.</p> <p>Learn more</p>

gx-271

LIQUID HANDLER

This small footprint, medium capacity liquid handler and autosampler offers small-to-large volume injection, fraction collection, and liquid handling capabilities. Its optional dynamic syringeless pumping system is capable of delivering microliters to hundreds of milliliters, with no change in hardware.

Innovative Injection Modules

This mid-throughput liquid handler can be configured with a GX Direct Injection Module for injection onto an HPLC or LC/MS system. An innovative injection port design that attaches directly to the injection valve reduces void volumes and minimizes carryover associated with calibrated connection tubing, allowing injection volumes from 2 µL up to 25 mL.

The continuous flow path design on all injection valves allows the system flow to continue even as the injection valve switches from load to inject, ensuring consistent pressure and flow.

Versatile, Space-Saving Design

With a small footprint of only 23 inches of linear bench space and a mid-size bed capacity, you'll have the perfect blend of size, performance, and capacity. On-bed reservoirs provide access for up to four solvents without utilizing a position on the bed. The modular design supports the use of Code 20-, 200-, or 34X-series racks and easily accommodates a variety of tubes, vials, and microplates.



Tools and Resources

Reference Guide: Probe Reference Guide

Procedures: GX 27X Installation Qualification Procedures

Instructions: GX 27X High Mount Preparation Instructions



REQUEST A QUOTE

Visit www.gilson.com



LOADING SYSTEMS

Gilson provides loading systems, allowing for sample transfers and other liquid handling tasks. These reliable systems can fit in any automated liquid handling platform or in HPLC semi-preparative and preparative systems.

SELECTION GUIDE

VERITY® 4X20 SYRINGE PUMPS
4020 SINGLE 4120 DUAL
WITH TEE 4220 DUAL



VERITY® Syringe Pumps Provide Speed and Reliability

- Performs small- and large-volume, repetitive liquid transfers
- Available in single, dual, and dual syringe with tee configurations
- Compatible with all Gilson liquid handlers

[Learn more](#)

GX SOLVENT SYSTEM



Bi-Directional Pump for the GX-271 and GX-281 Liquid Handlers

The GX Solvent System can switch from aspirate to dispense mode and can deliver liquids at flow rates up to 50 mL/min.

It can accommodate up to five different reservoir solvents.

[Learn more](#)

verity®

4120

The VERITY® 4120 Dual with Tee Syringe Pump is equipped with two syringes that are user-selectable. The capacity of the left syringe must be greater than or equal to the right syringe. The instrument includes one valve to direct liquid from reservoir or probe (on the left) and a tee connected via junction tubing (on the right). Single syringe and standard dual (no tee) models are also available.

The VERITY 4120 Dual with Tee Syringe Pump assures accuracy in sample transfers, dilutions, reagent additions, mixing, and other liquid handling tasks. It offers speed and reliability for liquid handling tasks.

VERITY® 4120 Dual with Tee Syringe Pump	
Technical Specification	Definition
Communication	USB
Dimensions (W x D x H)	22.6 x 17.1 x 26.9 cm (8.9 x 6.7 x 10.6 in.)
Precision	1%
Syringe Capacity	100 µL, 250 µL, 500 µL, 1 mL, 5 mL, 10 mL, or 25 mL
Software Control	PC control via USB and TRILUTION® LH or TRILUTION® LC Software
Tee	Type: Three port, no moving parts Diameter of channels: 1.5 mm Length of channels: 14 mm Angle between channels: 120° Liquid contact material: PEEK Dead volume: 51 µL
Volumetric Accuracy	±2% (10%-90% syringe capacity, water)
Weight	6.8 kg (15.0 lbs.)

VERITY® 4120 Dual with Tee Syringe Pump

Description	Part Number
VERITY® 4120 Dual with Tee Syringe Pump	31130002



Visit www.gilson.com

REQUEST A QUOTE

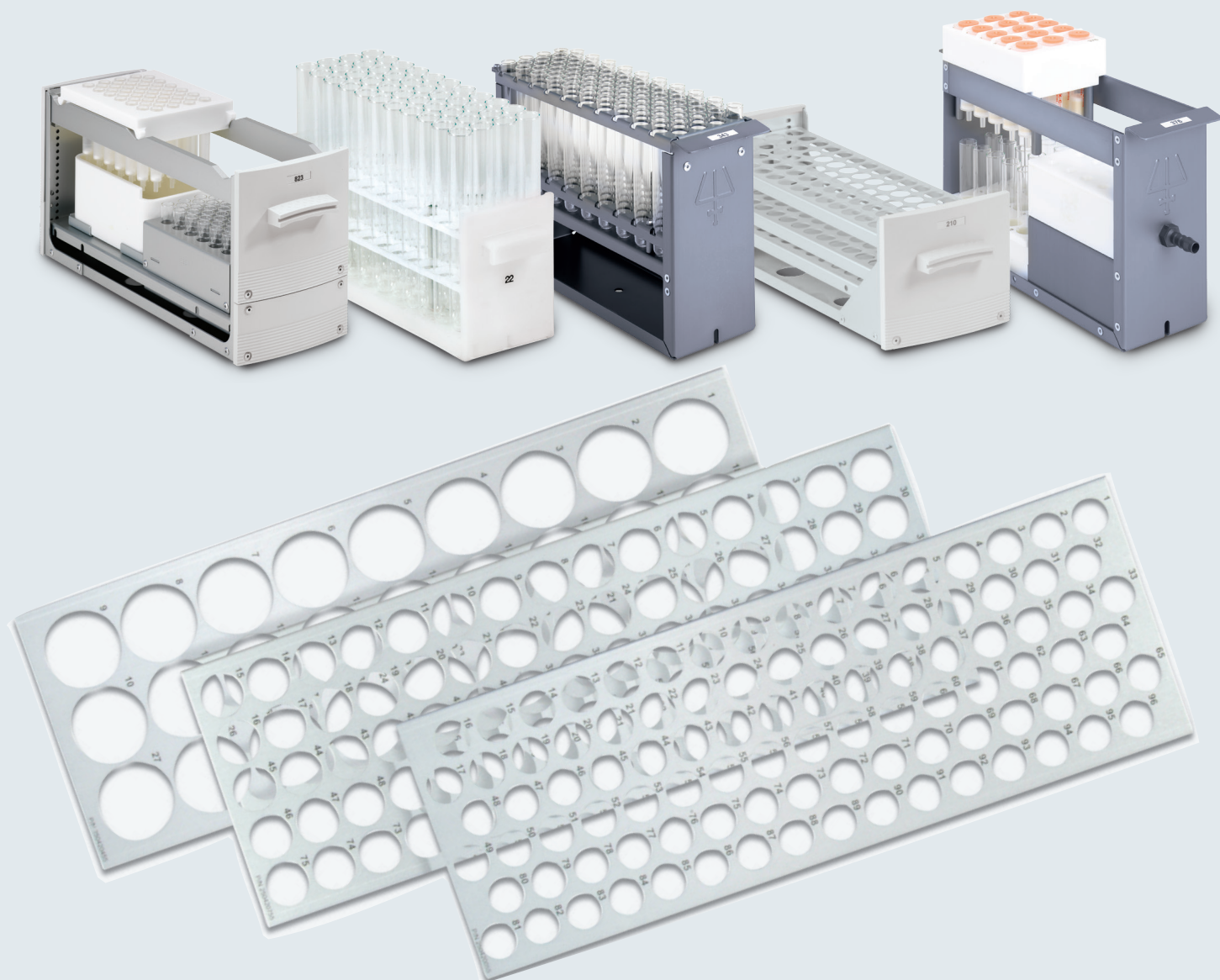
RACKS

STANDARD AND CUSTOM RACKS

Gilson offers standard and custom racks to meet the needs of any application. A variety of vessels can be accommodated, including tubes, vials, microplates, and microchips.

RACKCOUNT™ SYSTEM

RackCount System overlays add numbering patterns to rack positions allowing you to quickly and easily locate specific samples or collected fractions on the bed of Gilson liquid handlers. The overlays are available in serpentine or non-serpentine numbering patterns.



ACCESSORIES

OPTIMIZE YOUR INSTRUMENTATION

Complementing durable and flexible instruments, Gilson accessories optimize instrumentation to fit application requirements for the ultimate solution.

SELECTION GUIDE

VALVEMATE® II Valve Actuator



Increase the Flexibility of Your System

Extends the capability of any chromatography or liquid handling system by offering options for solvent selection, column switching, and sample trapping

Wide variety of valves, available in stainless steel or in biocompatible materials

Fully controlled either via keypad or by TRILUTION® LC and LH Software

[Learn more](#)

Orbital Shaker



The Orbital Shaker is specifically designed for on-line or off-line liquid handling, vortexing, and mixing. It is a fully functional, stand-alone instrument. This compact shaker fits on one rack position of a GX-281 Liquid Handler bed. The shaker provides a range of customer-controlled shaking (20 to 720 rpm), allowing vortexing on various vessel sizes and sample volumes.

Compatible with a Wide Range of Racks

The Orbital Shaker is compatible with all Code 200-series racks. A single rack attaches easily using set screws; rack placement is accurately guided by locator pins.

[Learn more](#)

Racks



Gilson offers standard and custom SPE racks to meet the needs of any and all applications. A variety of vessels can be accommodated including tubes, vials, or microplates.

[Learn more](#)

PURIFICATION

Scaling up Your Systems, From Research to Production

INSTRUMENTS

From high performance liquid chromatography to centrifugal partition chromatography, we offer manual and automated solutions, available through purchase or leasing.

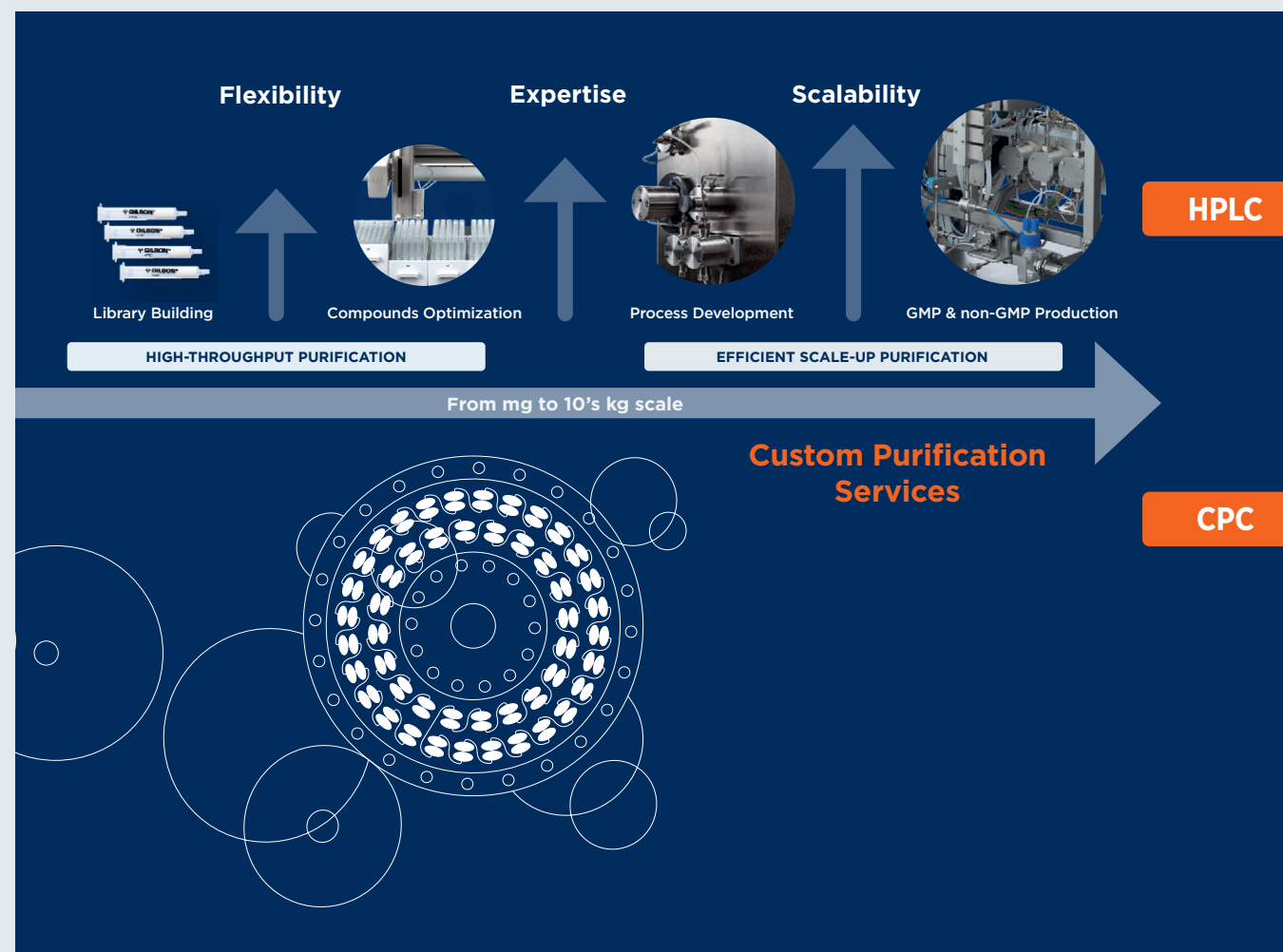
EXPERTISE

From feasibility studies to method development, we secure your investment by providing expert advice, either from our application labs or in your lab.

SERVICES

From standard maintenance, qualification, and service, we guarantee the performance of your equipment. To support your rapid development, we can purify your compounds in our kilogram scale lab.

Always a Gilson Solution to Reach Your Requirements



Achieve accurate, reliable results with our purification chromatography systems and solutions.

Purify

- Isolate active ingredients or analytical standards with a high degree of purity
- Isolate impurities for further characterization

Fractionate

- Global partition of an extract to identify active compounds from sub-groups
- Partition to remove non-desirable molecule(s) from a complex mixture

Polish

- Increase purity of an already relatively pure compound

Capture

- Enrich a targeted compound from a large volume sample

Desalt

- Removal of salts from previous purification steps

Chromatography Solutions

High Performance Liquid Chromatography (HPLC) or Cartridge Based

Sample constituent are separated based on their relative affinities for the mobile phase and the solid stationary phase.



To learn more about our Liquid Chromatography HPLC solutions, visit www.gilson.com.

[Learn more](#)

Centrifugal Partition Chromatography (CPC)

The components are separated based on their partition coefficient between two immiscible liquid phases: the stationary and mobile phases.



To learn more about our Centrifugal Partition Chromatography solutions, visit www.gilson.com.

[Learn more](#)

SELECTION GUIDE

VERITY® 271
HPLC System



High Performance Liquid Chromatography (HPLC)

High Throughput Purification Solutions for library building

- Large number of samples and fractions with VERITY® 271 and VERITY® 281 platforms (10 to 100s)
- Automated purification workflow including method screening, scout runs, purification runs, or fractions reinjection
- Open access capabilities
- Capability to use multiple HPLC columns with ID up to 50 mm

Automation - Flexibility - Open access

[Learn more about VERITY® 271](#)

[Learn more about VERITY® 281](#)

VERITY® 281
HPLC System

VERITY®
Compact LC
System



Compact Solutions are Ideal for:

- Low number of samples per day (1-5)
- Ability to manually change gradient and collection during the separation
- Capability to run HPLC column ID 10-50 mm or Flash cartridges
- Fully compatible with CPC

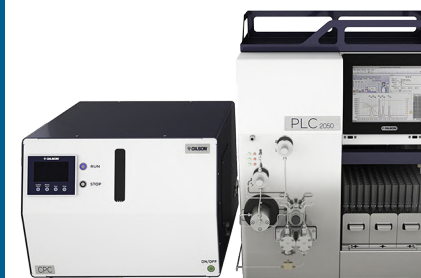
Usability - Modularity - Reduced Bench Space

[Learn more](#)

Productivity Range	Column ID (mm)	Standard Flow Rate (mL/min)	ASPEC System	30X System	322 Pump	VERITY 3240 150 mL Pump	PLC 2050 Compact	PLC 2250 Compact	PLC2500 Compact
Micro Fractionation Desalting	Cartridge	N/A	X						
Micro Preparative	4.6	0.8-1		5-10-25SC HEADS	H1-H2 HEADS				
Semi Preparative	10	3-5		10-25SC HEADS	H1-H2 HEADS	X	X		
	20	18-20		25-50SC HEADS	H2 HEAD	X	X	X	
Preparative	30	40-45		50SC HEAD		X	X	X	
	50	100-120				X		X	X
Pilot	75	250-300							X
	100	450-500							X

SELECTION GUIDE

VERITY®
Compact CPC
System



Centrifugal Partition Chromatography (CPC)

Purification Solutions are Ideal for:

- Complex samples: natural products, hemp, fermentation broth, biomass
- No solid support - competitive to flash purification
- Directly scalable from research and process development to production
- Purification of ingredients with a high degree of purity and extracts fractionation

Alternative to flash chromatography for natural compounds complementary to HPLC

[Learn more](#)

PRODUCTIVITY RANGE	CPC Model & Volume	Standard Flow Rate (mL/min)	Associated PLC Model		Customized SKID LC
Semi Preparative to Preparative with High Selectivity	CPC 250	8-50	PLC 2250 Compact		
Preparative to Pilot Fractionation	CPC 1000 PRO	150-300		PLC 2500 Compact	X
Process	Contact US				

PUMPS

Gilson offers unsurpassed flexibility in pumping systems with an extensive product range and accommodations.

SELECTION GUIDE

<p>VERITY® 3011 ISOCRATIC PUMP</p>		<p>Ideal Pumping Solution for Chemical Reaction in Petroleum Applications, and GPC Cleanup in Environmental Applications</p> <ul style="list-style-type: none"> • High-pressure rating, up to 8,700 psi (600 bar), for accommodating industrial level applications • Quick-connect pump heads for simple maintenance and reduced downtime • Flow rates from 10 µL/min to 10 mL/min and integrated touchscreen controller for convenient, stand-alone operation <p>Learn more</p>
<p>305 HPLC PUMP 306 HPLC PUMP</p>		<p>Cost-Effective, Dependable Pumping Solution</p> <ul style="list-style-type: none"> • Available in isocratic, binary, and ternary configurations • Interchangeable pump heads to accommodate flow rates from 10 µL/min to 200 mL/min at pressure up to 8700 psi (600 bar), depending on the pump head. <p>Learn more</p>
<p>322 HPLC PUMP</p>		<p>Binary High Pressure Gradient Pump for Analytical to Semi-Preparative HPLC</p> <ul style="list-style-type: none"> • Accommodates flow rates from 0.30 mL/min up to 30 mL/min at pressures up to 4,350 psi (300 bar) • Compatible with HPLC columns from 4.6 to 20mm ID • Variable High-pressure dynamic mixer <p>Learn more</p>
<p>VERITY® 3240 PUMP</p>		<p>Premiere High Performance Binary Gradient Pump for semi preparative to Preparative Chromatography</p> <ul style="list-style-type: none"> • Large flow rate up to 150ml/min and pressure range up to 420 bar (6090 psi) • Designed to effectively work with preparative HPLC columns from 10 mm to 50 mm ID • Ideal for high throughput purification chromatography allowing for scaling up purification from milligrams up to tens of grams <p>Learn more</p>
<p>333/334 HPLC PUMPS</p>		<p>High Flow Binary Gradient Pump for Preparative HPLC</p> <ul style="list-style-type: none"> • Accommodates flow rates up ranging from 1 mL/min to 200 mL/min at pressures up to 3,040 psi (210 bar) using columns up to 50 mm ID • Features a variable-volume, dynamic mixer for optimized high pressure gradient performance <p>Learn more</p>

verity®

3011

MAKE YOUR LAB LIFE EASIER

The VERITY® 3011 Isocratic Pump is an innovative liquid delivery solution for chemical reaction monitoring in petroleum applications and for gel permeation chromatography (GPC Cleanup) in environmental and food, and beverage testing applications.

Simple Head Changing

The VERITY 3011 Isocratic Pump features a virtually pulse-free, stable solvent flow rate, ensuring stable flow delivery to detectors, and allowing for a wider range of application capabilities on one pump. The pump also features an easily interchangeable quick-connect pump head, making maintenance simple and reducing costly downtime.

The reproducibility and accuracy in reactions when using this pump, coupled with its low operation and maintenance costs, makes the VERITY 3011 Pump an ideal choice for many laboratories that pursue improved results and are trying to minimize costs, operators, and downtime.

The VERITY 3011 Isocratic Pump offers a stand-alone pumping system with high valued features:

- Quick-connect pump heads for easy installation, and simple maintenance
- High pressure rating for accommodating industrial level applications in the petroleum industry
- Integrated touchscreen controller for convenient, stand-alone operation
- Compact and stackable design that fits easily into a refrigeration unit or a fume hood
- Flow rates from 0.01 to 10 mL/min, depending on the pump head, and pressures of up to 600 bar (8702 psi)



VERITY® 3011 Pump	
VERITY 3011 Pump	38114001
PUMP HEADS	
Description	Part Number
5 SS Pump Head Assembly (Stainless Steel)	38014217
10 SS Pump Head Assembly (Stainless Steel)	38014216

 [REQUEST A QUOTE](#) Visit www.gilson.com

verity®

3240

The VERITY® 3240 High Pressure Binary Gradient Pump is designed for semi-preparative to preparative purification. It provides an economical and compact pumping solution for preparative purification.

Purify With Confidence

The VERITY 3240 Pump delivers reproducible and precise elution gradients to achieve repetitive isolations of targeted compounds with Gilson high throughput purification platforms.

Scale Up Capabilities

The VERITY 3240 Pump has been designed to effectively work with preparative HPLC columns from 10 mm to 50 mm ID allowing for scaling up purification from milligrams up to tens of grams on the same Gilson automated purification platform.

Workhorse in the Laboratory

The large flow rate up to 150 mL/min and pressure range up to 420 bar (6090 psi) allow the VERITY 3240 Pump to cover most semi-preparative to preparative HPLC purification needs.

Safe and Efficient

The VERITY 3240 Pump has an optional leak detector to secure purifications. Optional inlet solvent selectors for up to four solvents per head support high throughput purification on different column types or for column regeneration.



 [REQUEST A QUOTE](#) Visit www.gilson.com

DETECTORS

Gilson offers a complete line of HPLC detection solutions that are ideal for analytical, semi-preparative, and preparative HPLC applications.

SELECTION GUIDE

VERITY® 1741 UV-VIS Detector



UV-VIS Diode Array Detection

- With a large selection of flow cells for semi-preparative to preparative purification (up to 500mL/min), the reliable and versatile VERITY® 1741 UV-VIS Detector is coupled with the power of multiple-wavelength scanning range from 200nm to 800nm.

[Learn more](#)

VERITY® 1920 Mass Spectrometer



Mass Detection

- High detection sensitivity and selectivity for compounds purification thus improving time to discovery.
- With a mass range of 10-2000 m/z, the VERITY 1920 MS helps you detect small to large molecules such as peptides and small proteins easily.
- Available with either electrospray ionization (ESI) or atmospheric pressure chemical ionization (APCI) ion source.

[Learn more](#)

VERITY® 1601 ELS DETECTOR



ELS Detection

- Evaporative Light-Scattering Detection is a nearly-universal and powerful detection mode for liquid chromatography.
- Commonly used as a complementary option to UV-Vis detection when analytes do not possess any chromophore.
- The VERITY® 1601 features a specific nebulizer, for the needs of preparative HPLC and Flash Chromatography.
- Low-temperature evaporation leveraging semi-volatile or thermally labile compounds detectability.

[Learn more](#)

VERITY® 1810 Conductivity and pH Monitor



Conductivity and pH Detection

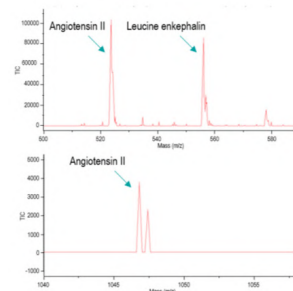
- The VERITY® 1810 is an integrated conductivity sensor and an external optional pH sensor, ideal for pH dependent purifications.

[Learn more](#)

PEPTIDE AND OLIGONUCLEOTIDE PURIFICATION SYSTEMS

SELECTION GUIDE

VERITY® 271 LCMS System



PEPTIDE PURIFICATION

Mass-Based Peptide Purification

The VERITY 271 LCMS system combines the power of High-Performance Liquid Chromatography (HPLC) with Mass Detection (MS) for conditional fraction collection.

Initial screening for peptide purification can be done using smaller columns for scouting, and then the LC optimized conditions can be scaled up, allowing researchers to target a specific peptide for purification. In addition, with UV-VIS detection, the optional single quad VERITY 1920 MS Detector with electrospray ionization (ESI) or atmospheric pressure chemical ionization (APCI) ion sources supports targeted fractions collection using selected ion monitoring (SIM) channels.

With a mass range of 10-2000 m/z, the VERITY 1920 MS helps you easily detect large molecules such as peptides and small proteins. Many biomolecules carry multiple charges with electrospray ionization so that even proteins of several tens of kDa can be measured within the 2,000 m/z range.

The method takes advantage of the software's powerful conditional fraction collection feature, which simultaneously combines UV-VIS signals and up to five MS channels to improve selectivity and purity.

[Learn more](#)

ASPEC® 274 System



Parallel Cartridge-Based Purification Desalting for Proteomics

The peptides can be desalted after cell lysis and protein digestion using a 4-probe positive pressure Gilson ASPEC® 274 System, typically with C18 1 mL solid phase extraction columns prior to LCMS/MS analysis.

Small Length Oligonucleotide Purification

The small length oligonucleotides can be purified on cartridges. The parallel purification allows for higher throughput.

[Learn more](#)



Tools and Resources

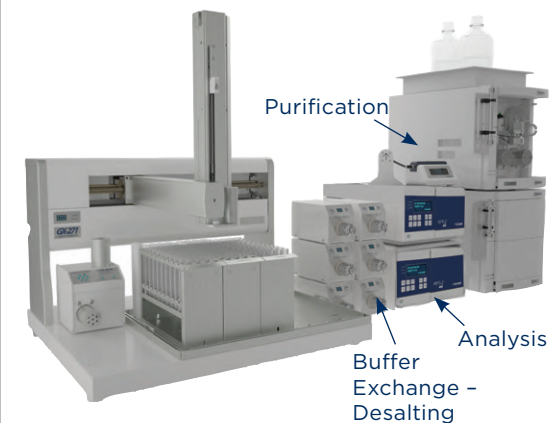
Application Notes: GX-271 Oligo Purification System: Streamlined Purification of Assay-Ready Oligonucleotides by Automated HPLC

FLEXIBLE AND HIGH THROUGHPUT PURIFICATION OF OLIGONUCLEOTIDES

After the cleavage and deprotection steps, the purification of oligonucleotides is done by Ion pairing reversed phase (IP-RP) or ion exchange (IEX) liquid chromatography. After purification, the fractions are desalted by Size Exclusion Chromatography (SEC - Gel Filtration).

This ideal purification system is able to deliver consistent and precise gradients to allow impurity removal while achieving a high-level recovery at various scales.

VERITY® Oligo Purification System



OLIGONUCLEOTIDE PURIFICATION

Purify and Control Oligonucleotides in One Continuous Production Run

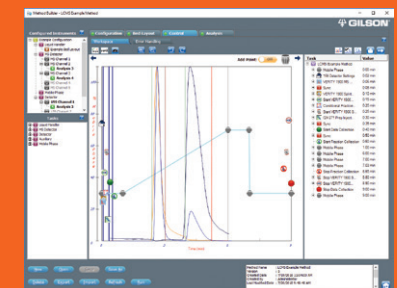
with the VERITY® Oligo Purification System, you can now have a single platform for continuous purification and analysis of reagent-grade oligonucleotides then desalting of the controlled fractions

A Single System to Save Space and Money

The VERITY Oligo Purification System can be configured to your needs and budget from a secure and robust purification platform up to a continuous production of oligonucleotides that can be operated 24 hours a day, 6 or 7 days a week.

TRILUTION® LC Software

TRILUTION LC Software is a user-friendly software for controlling our high-pressure liquid chromatography systems and automated liquid handling instruments. TRILUTION LC provides fraction collection capabilities, conditional logic collection, accurate fraction simulation, graphical drag-and-drop user interface, and graphical sample tracking. Built-in, software-based error handling conditions for each process stage can be customized for fully automated, unattended operation without fear of sample loss.



[REQUEST A QUOTE](#)

Visit www.gilson.com

LC PURIFICATION SYSTEMS

With the capability to purify compounds by preparative HPLC, flash chromatography, and CPC on the same instrument, Gilson's PLC 2050/2250/2500 Purification Systems simplify and streamline compound purification. These compact systems feature UV-VIS detection, an integrated pumping system, fraction collector, touchscreen control, and Gilson GLIDER Software.



These customizable instruments are available in simple configurations for basic applications, but with a wide range of upgrade options to meet your lab's demands. PLC 2050 and PLC 2250 Purification Systems with Autosampler are configured with a GX-241 Liquid Handler for automated sample injections and increased throughput.

High Performance Features

- Intuitive touchscreen interface for easy method writing and modifying of parameters
- Built-in automatic injection valve
- Two or four independent solvent inlets for binary or quaternary gradients
- Three-rack fraction collector capacity with unlimited collection cycles
- Variable dynamic mixing chamber
- Dual reciprocating pump technology
- Four-wavelength UV-VIS or DAD detector
- Evaporative light scattering detection (ELSD Option)

PLC Purification Systems for Each Column Size

PLC 2050: Flow rates up to 50 mL/min with pressure up to 300 bar

- Prep HPLC: 10–30 mm diameter ID columns
- CPC: 100 mL column
- Flash Chromatography: 2.5–70 g cartridges

PLC 2250: Flow rates up to 250 mL/min with pressure up to 230 bar

- Prep HPLC: 10–70 mm diameter ID columns
- CPC: 250 mL column
- Flash Chromatography: 10–600 g cartridges

PLC 2500: Flow rates up to 500 mL/min with pressure up to 110 bar

- Prep HPLC: 20–75mm diameter ID columns
- CPC: 1000 mL column
- Flash Chromatography: up to 1.2 kg cartridges



PLC Purification Systems are compatible with CPC columns.



GLIDER Software

GLIDER Software supports the PLC Purification Systems, creating a single, advanced tool for HPLC, flash chromatography, and CPC applications.

Visit www.gilson.com

REQUEST A QUOTE

verity®

CPC LAB MS

The VERITY® CPC Lab MS System allows you to perform mass directed purification of target compounds by centrifugal partition chromatography (CPC). This automated, cost-effective, liquid-liquid purification technique utilizes reusable, silica-free chromatographic columns, and the VERITY® 1920 Mass Spectrometer to streamline your workflow and allow you to quickly isolate added value molecules with high yields and purity.



Efficient and Streamlined Workflow

The reusable, silica-free columns offer high injection capacities of milligrams to kilograms. There are no columns to replace or silica to recycle, and no risk of blocked or contaminated columns. The VERITY CPC Lab MS System uses five times less solvent and eliminates the need for pre-treatment prior to injection.

Save Time with Mass-directed Purification

Mass-directed purification saves time by targeting compounds of interest, reducing the overall number of fractions collected that require dry down, reconstitution, and analysis.

Ideal for Isolation of Biologically Active Natural Products

Natural products are usually complex and can contain multiple valuable molecules. Mass-directed purification allows individual targeting and selective collection of molecules, even for those that do not provide UV signal, based on their mass to charge ratio.

Because the VERITY CPC Lab MS System does not denature fragile molecules, it is an ideal choice for natural extract fractionation and natural compound purification. Achieve 95% recovery with > 99% purity.

Easy-to-Use

This fully automated system is controlled by GLIDER Software, praised by users for its intuitive touchscreen interface that enables easy method writing and modification of parameters.



Tools and Resources

Technical Notes: Introduction to Centrifugal Partition Chromatography

Article: CPC Cost Effective Approach to Purification of Cannabinoids

Video: What is Liquid-Liquid Chromatography



REQUEST A QUOTE

Visit www.gilson.com

The VERITY® SKID LC is designed for use in preparative and industrial liquid chromatography (LC). The system automatically elutes the mobile phase, injects a solution, detects molecules by UV/VIS absorbance (by default 200 to 600 nm), and collects fractions when connected to a LC column, such as HPLC, MPLC, or CPC. Several of the features detailed below can be customized for your needs.

Reliable and Powerful

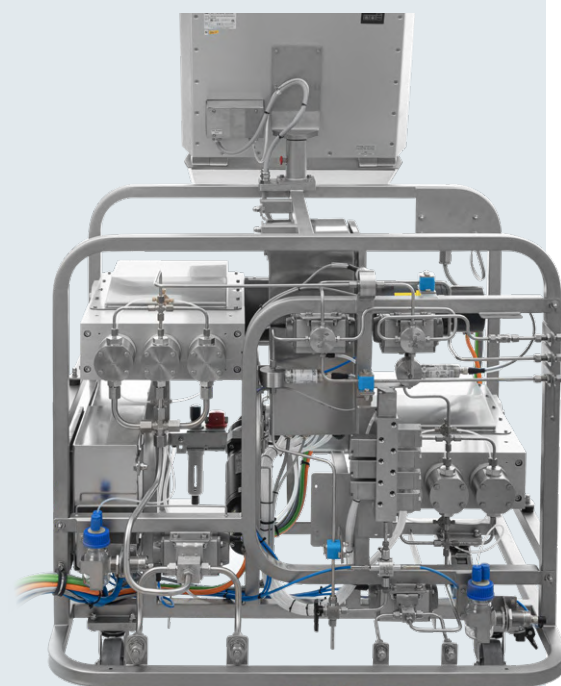
- Operates at a maximum pressure of 100 bar (1450 psi)
- Up to 5 L/mn fast elution pump available in isocratic (1 pump) or binary (2 pumps) versions
- Elution piston pump achieves 2% flowrate accuracy and 0.5% flowrate repeatability for faster cleaning and optimized production time, along with improved reliability for production, cost-planning, and quality
- Pressure transmitters, alarms, and leak sensors make for improved performance and control of the fluidic journey

Easy-to-Use and Flexible

- Structure is solvent-resistant and compatible with a broader range of applications
- Reinforced rotative wheels equipped with directional locks and brakes for easy mobility on-site
- Easy-to-use software allowing automated stack injections and a preset list of methods for automated production
- Backflush valves for ascending and descending modes, which allow for safer and easier use with dual rinsing and dual modes

Safe and Compliant

- Controlled by a certified 21 CFR part 11 chromatographic software specifically designed for production
- Software allows for automatic recording of process data that can be shared via customer's network, and customizable reports and alerts for full control of actions performed during processing
- CE and ATEX certified for use in a potentially explosive atmosphere and equipped with FDA compliant spare parts and consumables



PURIFICATION SERVICES

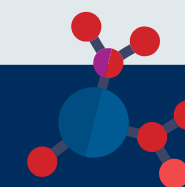
ENRICH OR PURIFY ACTIVE INGREDIENTS FROM MG TO TONS

Gilson Purification has over 40 years experience in analytical, preparative and industrial scale chromatography. We provide specialist purification services, helping you purify or enrich your molecules of interest. Whether you have simple or complex starting materials, such as biological matrices, natural extracts, synthetic mixtures, or fermentations broths, we offer end-to-end support from feasibility to production through industrial intensification.

Contact US

Your Needs Are Our Goals

- Production of highly purified analytical standards
- Production of active ingredients
- Removal of non-desirable molecule(s) from a complex mixture
- Global fractionation of your extract
- Target molecule enrichment
- Impurity isolation



How We Can Support You

- Feasibility study, method development and optimization
- Intensification, scale up study, CAPEX, OPEX evaluation
- In-house production from mg to tons scale
- Full project support to provide turnkey solutions including instrumentations & method(s)



Our Team, Equipment, and Technologies

- A complete team of chemical engineers, scientists, and technicians
- R&D and Pilot/Production application laboratories
- Innovative silica free Centrifugal Partition Chromatography technology for complex mixture purification
- Prep and process LC techniques such as flash chromatography and HPLC
- Analytical equipment for purity determination or structural elucidation (e.g. HPLC, HPTLC, GC, NMR, etc.)



Service Model Options

- Service performed at our state-of-the-art facility at Gilson Purification
- Outsourcing solution by our team of experts in your facility
- Consultation service



Thanks to our team of experts and our in-house innovative purification technology, we can solve problems related to the use of traditional techniques and make chromatography an affordable technology for a larger range of applications.

Specification of your project under NDA

Feasibility studies / Scale up / Production

Report and wrap up meeting

Gilson purification services is not available globally. Please contact your local [Gilson representative](#) for more information.

Visit www.gilson.com

REQUEST A QUOTE

EXTRACTION

GET THE MOST FROM YOUR ANALYTICAL SYSTEMS WITH TRUSTED RESULTS

Solid phase extraction (SPE) is a highly selective clean-up technique that eliminates matrix effects and concentrates compounds present as traces to improve analytical detection. The ASPEC® extraction line offers hands-free solutions that provides increased sample throughput and reliable test results while providing the traceability needed when studying drugs metabolites, contaminants, or proteins in biological, food, or environmental matrices.

SELECTION GUIDE

ASPEC® 241 System		<ul style="list-style-type: none"> • Compact system for basic SPE automation • Up to 36 samples on 1 mL cartridges, 20 on 3 mL, and 16 on 6 mL <p>Learn more</p>
ASPEC® 271 System		<ul style="list-style-type: none"> • Ultimate versatility system for basic and advanced SPE automation • Up to 108 samples on 1 mL cartridges, 60 on 3 mL, and 48 on 6 mL • Optional dual syringe for accurate transfer down to 10 µL • Optional injection for direct UHPLC or LC integration • Compatible with Gel Permeation Chromatography (GPC) and liquid-liquid extraction (LLE) and SLE cleanup applications <p>Learn more</p>
ASPEC® 274 System		<ul style="list-style-type: none"> • High throughput system for basic and advanced SPE automation • Process four samples in parallel • Up to 108 samples on 1 mL cartridges, 60 on 3 mL and 48 on 6 mL • Compatible with LLE and SLE cleanup <p>Learn more</p>

ASPEC® 271 Large Volume System		<ul style="list-style-type: none"> • Ultimate versatility system for basic and advanced small- to large-volume SPE automation • Up to 9 large volume samples on 3 mL and 6 mL cartridges • Segregated aqueous and organic waste • Optional dual syringe for accurate transfer down to 10 µL • Optional injection for direct UPLC or LC integration • Compatible with GPC and LLE cleanup applications <p>Learn more</p>
ASPEC® 274 Large Volume System		<ul style="list-style-type: none"> • High throughput system for small- to large-volume SPE automation • Process four samples in parallel • Up to 32 samples on 3 mL and 6 mL cartridges • Segregated aqueous and organic waste • Compatible with LLE cleanup <p>Learn more</p>

IMPROVE MANUAL SPE REPRODUCIBILITY

With a uniform and consistent flow rate, the ASPEC® Positive Pressure Manifold (PPM) improves solid phase extraction (SPE) reproducibility and recovery, even with high viscosity samples. It integrates easily into your lab's workflow and provides a fast and simple way to prepare samples for subsequent analysis by chromatography.



Compact and Easy to Set Up for Quick Operation

With its small footprint and only a single gas input, the ASPEC PPM is quick to set up and easily fits under fume hoods for extractions that use volatile solvents.

Positive Pressure for Reproducible Extractions

With its integrated pressure gauge and intuitive controller, the manifold provides better flow control among samples and between runs than traditional vacuum manifolds, providing greater confidence in your data. Positive pressure ensures that all samples will elute regardless of the viscosity level.

Parallel Clean Up

Compatible with both popular SPE cartridges and 96-well plates, the ASPEC PPM performs parallel extractions to increase throughput and productivity.

Optimize Workflow Throughput

By combining the ASPEC PPM with PIPETMAN® multichannel pipettes or PLATEMASTER® for 96-well SPE plates, get the guarantee of accurate and fast sample management and extraction.

One Unit - Four Formats

The base module is compatible with ASPEC SPE cartridges (1, 3, and 6 mL) and 96-well SPE plates for a high throughput clean-up.

Tools and Resources

Application Notes: LCMS/MS detection of Δ⁹-tetrahydrocannabinol in plasma using solid phase extraction cleanup
User's Guide: Gilson Guide to SPE Automation

ASPEC® Positive Pressure Manifold	
Description	Part Number
ASPEC® PPM Base Unit	37012000
ASPEC® PPM Manual SPE Installation Kit	37417010

Visit www.gilson.com

REQUEST A QUOTE

The ASPEC® 274 System for positive pressure solid phase extraction (SPE) maximizes throughput by processing up to four samples in parallel. With its small footprint and multiple probes, it is the ideal choice for high-throughput SPE automation on 1, 3, or 6 mL cartridges. Combined with ASPEC® SPE Cartridges, it generates reproducible and efficient sample cleanup for clinical, forensic, doping, food, and environmental testing labs.



Parallel Processing for Maximum Efficiency

Four-probe Z-arm enables processing of four samples in parallel, increasing throughput and efficiency.

Positive Pressure for Reproducible Extractions

Positive pressure extraction with a unique sealing cap design increases reproducibility from sample to sample. The syringe pump delivers accurate volume dispensing with reproducible flow-rate.

Smart Design for Maximized Performance

Mobile rack technology enables multiple fractions elution and extractions per sample and additional fractions transfer in closed vials after SPE.

Intuitive Error Handling for Trusted Results

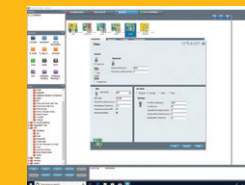
The syringe pump pressure-sensing module provides error handling for high cartridge pressure or clogged liquid lines and monitors pressure on each fluid path individually. Innovative jet wash rinse stations minimize carryover and cross contamination.

Versatile Software Control for Optimized Productivity

TRILUTION® LH Software allows for multiple liquid handling applications such as liquid-liquid extraction (LLE) and SPE on the same ASPEC system. Optimize throughput and efficiency by processing samples in either batch or sequential mode. Perform multiple elution and parallel solvent testing to quickly automate and optimize method development.

TRILUTION® LH Software

TRILUTION® LH Software is a comprehensive software package for seamless automation of all liquid handling (LH) and solid phase extraction (SPE) methods.



With its intuitive interface, simple drag-and-drop method creation, and application simulation, it combines flexibility and ease-of-use.

Tools and Resources

Application Notes: ASPEC® System: Fast, Accurate, and Reliable Quantification of THC and Metabolites from Blood in Forensics Testing with Fully-Automated SPE

Application Notes: Automated Solid Phase Extraction of Benzodiazepines from Urine Using the Gilson ASPEC® 274 System

REQUEST A QUOTE

Visit www.gilson.com

CONSISTENT PERFORMANCE, RELIABLE RESULTS

Get more reliable results with ASPEC® SPE Cartridges, ready-to-use, high-quality silica, and polymer cartridges. The ASPEC SPE Cartridges are available with ASPEC caps for cost-effective, automation-ready use on ASPEC automated solutions.



Key Features of Pre-Capped Cartridges for ASPEC Automation

- Run cartridges right out of the box, saving valuable time with no need for manual capping
- Remove potential health concerns with repetitive manual operations
- Run samples faster
- Prevent run stopping due to improperly installed caps
- Competitively priced versus uncapped cartridges with separated caps

Highly Selective Solutions

High performance solid phase extraction sorbents based on specific polymers or molecularly imprinted polymers (MIP) for sample cleanup before chromatographic analytical methods. AFFINIMIP® SPE and AttractSPE™ are now available pre-capped for ASPEC automation.

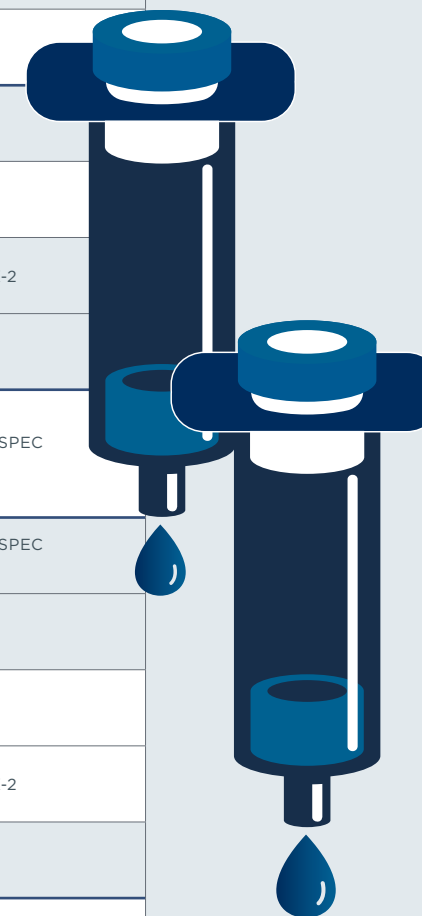
●	Mycotoxins Aflatoxins, Ochratoxin A, Patulin, ZON, DON
●	Pesticides Glyphosate and Ampa Multi-Residues
●	Endocrine Disruptors PFAs, Bisphenol A, PAHs
●	Drug Residues Chloramphenicol and Nitrofurans Amphetamines, Tetracyclines
●	Desalting Peptides



ASPEC SPE Cartridges - Retention Mechanisms Selection

Sample properties, such as matrix type and compounds of interest solubility and polarity, give a good starting point to identify the recommended sorbent and retention mechanism:

Analyte is soluble in		Analyte polarity	Recommended Phases (SILICA BASED - POLYMERIC)	
Aqueous	Sample Matrix Type	Aqueous	Non polar	ASPEC C18, ASPEC C8, ASPEC C4, ASPEC PHENYL, ASPEC CYCLOHEXYL, ASPEC DVB
			Non polar/Moderately polar	ASPEC C18 NEC, ASPEC C8, ASPEC C4, ASPEC CYANO, ASPEC HLB
		Polar	ASPEC CYANO, ASPEC ACT. CARBON	
		Aqueous/Organic	Cationic/Basic	ASPEC SCX, ASPEC SCX-2, ASPEC WCX
			Cationic/Basic (Neutral)	ASPEC X-SCX, ASPEC X-WCX
			Anionic/Acid	ASPEC SAX, ASPEC SAX-2, ASPEC WAX, ASPEC WAX-2
	Anionic/Acid (Neutral)		ASPEC X-SAX, ASPEC X-WAX	
	Organic	Non polar	ASPEC C18, ASPEC C8, ASPEC C4, ASPEC PHENYL, ASPEC CYCLOHEXYL, ASPEC DVB, ASPEC HLB	
	Organic	Aqueous	Non polar	ASPEC C18, ASPEC C8, ASPEC C4, ASPEC PHENYL, ASPEC CYCLOHEXYL, ASPEC DVB, ASPEC HLB
			Cationic/Basic	ASPEC SCX, ASPEC SCX-2, ASPEC WCX
Cationic/Basic (Neutral)			ASPEC X-SCX, ASPEC X-WCX	
Anionic/Acid			ASPEC SAX, ASPEC SAX-2, ASPEC WAX, ASPEC WAX-2	
Anionic/Acid (Neutral)			ASPEC X-SAX, ASPEC X-WAX	
Organic		Moderately polar	ASPEC SILICA, ASPEC FLORISIL, ASPEC ALUMINA, ASPEC CYANO, ASPEC DIOL NEC	
Polar		ASPEC CYANO, ASPEC DIOL NEC		



verity®

GPC CLEANUP

GPC Cleanup is a simple but efficient clean-up technique to eliminate matrix effect and preserve your GC or LC column life by discarding high molecular weight interfering substances contained in sample extracts and recovering analytes of interest into a pure fraction of solvent. The VERITY® GPC Cleanup system is a fully automated cleanup system which makes it an ideal tool to minimize risks to the users and improve reproducibility.

Fully Automated System to Improve Efficiency and Reliability

GPC post-extraction cleanup is typically used prior to analysis of contaminants such as pesticides, semi-volatiles, PAHs and PCBs, and pharmaceuticals - in environmental samples, food products, and animal tissue

High Capacity

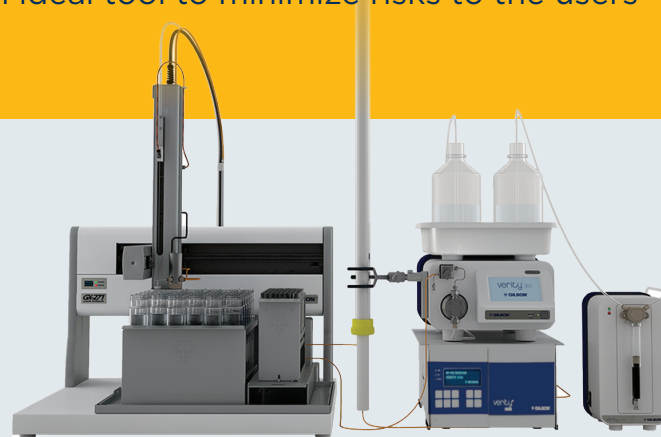
- Automated cleanup of up to 80 sample extracts

Complete Workflow Integration

- Large choice of racks for sample extracts and different evaporation vessels to directly collect compounds inside

Compliance with Government Agency Guidelines and Methods

- Meets government requirements for GPC cleanup - USEPA, USDA, USFDA, USGS, USDI, Centers for Disease Control (CDC), Canadian Food Inspection Agency (CFIA), European Union (EN 1528, 12393, DFG S19), AOAC International, etc.
- An optional VERITY® 1741 UV-Vis Detector (200-800 nm) is available to ensure GPC column calibration in compliance with GPC post-extraction guidelines when requested



The VERITY® GPC Cleanup System is configured with a GX-271 Liquid Handler equipped with 3-ways collection valve, GX Direct Injection Module, VERITY® 4020 Single Syringe Pump, VERITY® 3011 Isocratic Pump, TRILUTION® LC Software, and an optional 1741 UV-VIS Detector

High Flexibility

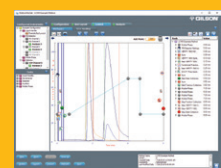
- Compatible with various columns from low pressure glass columns to higher pressure Stainless steel columns with the VERITY® 3011 Isocratic Pump (up to 10 mL/min, 600 bar (8702 psi))
- Can also be used for other chromatography applications as an Isocratic HPLC system from analytical to semi-preparative scale

Sample Integrity

- The septum piercing capability option can maintain the integrity of a sample extract by using closed tubes
- Overfill of the sample loop is not required, which helps to conserve the sample
- Independent flow paths between injection and fraction collection avoids cross contamination

All Under TRILUTION® LC Software Control : Easy-to-Use for a Full Safe Control

The VERITY GPC System is controlled by the powerful TRILUTION LC software which contains pre-programmed methods for GPC post-extraction cleanup. The software error handling and shutdown methods help to minimize solvent waste and sample loss.



Visit www.gilson.com

REQUEST A QUOTE

extractman®

EXTRACTMAN® offers a fast and gentle paramagnetic beads-based approach to isolating target proteins and is ideal for isolating elusive, weakly-bound protein complexes critical to protein interaction research.



Identifying Weak Protein Interactions

Co-immunoprecipitation (Co-IP) is a common technique for observing protein-protein interactions; however, weakly-or transiently-bound species often go undetected as aggressive or repeated wash steps can result in a loss of these interactions.

EXTRACTMAN differs from traditional magnetic bead-based co-IP techniques by using Exclusion-based Sample Preparation (ESP™) technology, making it ideal for capturing weakly bound protein complexes without exposing them to high shear forces from.

Paired with non-porous magnetic beads, EXTRACTMAN enables high-yield, high-purity isolations without the need for long washing steps

Rapid Isolation

EXTRACTMAN® uses surface tension and hydrophobic properties for ESP™-based extraction. This process gently and rapidly pulls bead-analyte complexes from sample to a series of washes and elute enriched and purified target compounds excluding unbound contaminants in a matter of seconds.

Ergonomic and Easy-to-Use

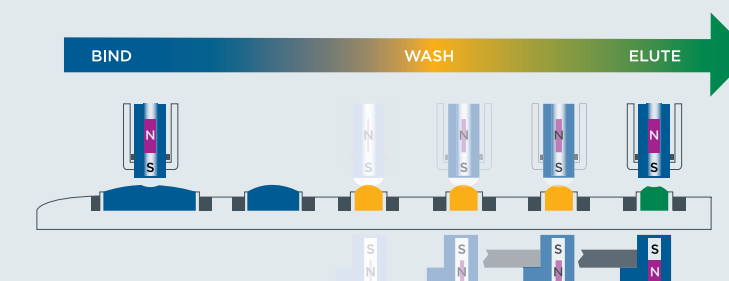
Slide-based extraction gently moves four samples in parallel through isolation with a simple slide of the handle. EXTRACTMAN has been used to rapidly isolate mRNA, DNA, and proteins from crude extracts using an assortment of commercial kits and reagent.

Watch EXTRACTMAN® in action

A Novel Platform for Target Protein Isolation



Watch video



Tools and Resources

Application Notes, Articles, Technical Notes: EXTRACTMAN Learning Hub

SHOP NOW

Visit www.gilson.com

Gilson SupaTop™

SYRINGE FILTERS

CLARIFY YOUR SAMPLES AND EXTEND THE LIFE OF YOUR ANALYTICAL SYSTEMS

For sample volumes up to 100 mL, the range of Gilson SupaTop™ Syringe Filters provides a quick, convenient, and reliable method of clarifying liquids intended for further analysis such as HPLC injection to combat particulate clogging of columns.

Gilson SupaTop Syringe Filters are available in two sizes, 13 or 25 mm, each with a choice of porosity of 0.22 µm or 0.45 µm.

Maintain Sample Integrity

- Pigment-free and sealant-free polypropylene housing
- HPLC-certified filters with low levels of UV-absorbing extractables

Save Time and Avoid Error

- Color-coded syringe filters to quickly identify membrane and porosity used
- High burst strength and durable construction.

A Membrane for all Your Needs

- The filter membrane should not interfere with the sample or bind proteins or other macromolecules.
- The table below provides a good starting point to identify the type of membrane used by application.

MEMBRANE APPLICATIONS	
Application	Membrane Type
(U)HPLC solvents	PTFE or Nylon
Aqueous solution	All except PTFE
Ion chromatography	PES or PTFE
Protein analysis	PES or PVDF
Environmental and food analysis	PTFE or Nylon
Clinical or toxicological analysis	PES
ICP/AAS metals analysis	PES or Nylon
Cell or Tissue culture media	PES

 [REQUEST A QUOTE](#)

Visit www.gilson.com



Membrane	Properties	Color Code	Pore Size	13 mm Diameter		25 mm Diameter	
				Part No.	Pack of	Part No.	Pack of
PES	Polyethersulfone (PES) is widely used for the clarification of biological samples. This low binding membrane is able to resist surfactants and hydrocarbon oils but is not suitable for use with low-polar organic solvents or aromatic hydrocarbons.		0.2 µm	ANR1322	100	ANR2522	100
				ANR1322D	1000	ANR2522C	500
			0.45 µm	ANR1345	100	ANR2545	100
				ANR1345D	1000	ANR2545C	500
MCE	Mixed Cellulose Esters (MCE) contain a blend of cellulose acetate and nitrocellulose fibers providing a more resilient membrane than CA for aqueous-based filtration. Higher binding than pure CA.		0.2 µm	ANM1322	100	ANM2522	100
				ANM1322D	1000	ANM2522C	500
			0.45 µm	ANM1345	100	ANM2545	100
				ANM1345D	1000	ANM2545C	500
NYLON	Polyamide (Nylon) is a popular membrane with superior chemical compatibility than CA or MCE. Able to filter aqueous or mild organic solvents, this membrane is naturally hydrophilic with low extractables.		0.2 µm	ANN1322	100	ANN2522	100
				ANN1322D	1000	ANN2522C	500
			0.45 µm	ANN1345	100	ANN2545	100
				ANN1345D	1000	ANN2545C	500
PVDF	Polyvinylidene Fluoride (PVDF) exhibits great chemical resilience being non-reactive to many solvents, acids, and bases. Appreciated for its low protein binding properties this membrane is used in biological sciences and its wide chemical compatibility range makes it ideal for HPLC sample preparation ahead of injection.		0.2 µm	ANV1322	100	ANV2522	100
				ANV1322D	1000	ANV2522C	500
			0.45 µm	ANV1345	100	ANV2545	100
				ANV1345D	1000	ANV2545C	500
PTFE	Polytetrafluoroethylene (PTFE) has the highest chemical compatibility rating of these filters. Being naturally hydrophobic this membrane is most suited to the clarification of organic solvents and for air venting processes. Not suitable for aqueous sample filtration without pre-wetting.		0.2 µm	ANP1322	100	ANP2522	100
				ANP1322D	1000	ANP2522C	500
			0.45 µm	ANP1345	100	ANP2545	100
				ANP1345D	1000	ANP2545C	500

NOTES

A series of horizontal dotted lines for writing notes.



LT800629 | ©2024Gilson

All product and company names are trademarks™ or registered® trademarks of their respective holder. Use of the trademark(s) in this document does not imply any affiliation with or endorsement by the trademark holder(s).