

Dedicated backpacks for patient mobility

Large model
Robust and comfortable for adults



Mini model
Light and small, especially designed for children

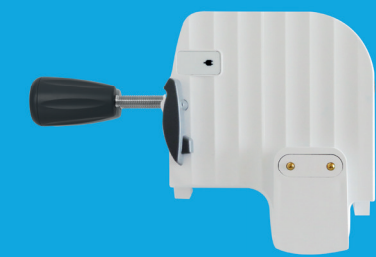


Trolley
From a carrying position into a moving position



Ambulatory devices accessories

Smart Holder power for power supply & Smart Holder COM to enable connection*



Partner software for maintenance*



* Compatible with Fresenius Kabi Amika & Amika+ Enteral Nutrition pumps.



Technical details

Infusion

Infusion modes

- Flow rate only mode: continuous infusion at a flow rate
- Continuous mode: continuous infusion at a flow rate, volume and time
- Ramp mode: 3 phases infusion at a volume and time
- Intermittent mode: cyclic infusion at a flow rate, volume and time

Flow rate

From 1 mL/h to 600 mL/h, 1 mL/h increments

Accuracy

- +/- 5% for flow rate \geq 10 mL/h
- +/- 0.5 mL/h for flow rate < 10 mL/h
- *Additional maximum flowrate error of +/- 2% from mean values under back pressure +/- 13.33 kPa.

Volume range

From 1 mL to 9999 mL, 1 mL increments

Priming

Automatic, semi-automatic and manual priming are available

Delayed start

Delayed start enables to postpone start of a new infusion from 1 min. to 24 h

KVO (keep vein open)

KVO function is a low flow rate from 1 mL/h to 10 mL/h to keep vein open during all infusion interruptions

Night mode

Night mode enables to manage pump luminosity at night by decreasing screen brightness

Max flow rate

Customization of pump flow rate to not exceed (from 1 mL/h to 600 mL/h)

Keypad lock

Disabling keypad to prevent unintentional key press

Nurse setting lock

Possibility to prevent patient from changing settings, access secured by code

Alarms / Informations

High priority alarms (Pumping stops and red LED blinking)

Missing set, Door open, Upstream occlusion, Downstream occlusion, Empty bag / Air in line, End of infusion, Empty battery, Technical alarms

Low priority alarms (Pumping continues and yellow LED is fixed)

End of infusion pre-alarm, Empty battery pre-alarm, Start reminder

Occlusion alarm

2 levels:
Low: 487.5 mmHg +/- 187.5 mmHg
High: 787.5 mmHg +/- 262.5 mmHg

Air alarms

Single bubble volume setting: from 0.125 mL to 0.75 mL
Cumulated bubbles volume setting: from 0.25 mL to 0.75 mL
Duration of cumulated bubbles detection: from 1 min to 30 min.

End of infusion pre-alarm

Customizable alarm to notify approaching end of infusion from 1 min. to 59 min. or from 1 mL to 999 mL

History menu

Infusion history (250 infusion events), Cumulative counter of volume infused during a period of time (from 1 to 99 days), Alarm history (250 alarm events)

Reset manufacturing settings

Automatic reset of all settings and history information (except date and time settings)

Technical specifications

Pumping mechanism

Linear peristaltic pumping system

Display

Color LCD 64.8 mm x 48.6 mm minimum (320 dots x 240 dots)

Dimensions (H/W/D) / Weight

Pump: Approx. 156.4 mm x 129.7 mm x 49 mm / ~ 0.65 kg
Smart Holder Power: Approx. 132 mm x 118 mm x 46 mm (without pole clamp) / ~ 0.45 kg

Clamp

Versatile rotary clamp to fix on a rail (10 - 35 mm) or a pole (\varnothing 8 - 40 mm)

Battery

7.2 V Lithium Ion rechargeable battery / 16.2 Wh
Battery life: minimum of 24 hours at 25 mL/h and 20 hours at 125 mL/h
Battery level indication on the display
Maximum charging time: 6 hours with pump off

Power consumption

Maximum 9 W in standard operating conditions

Power supply

Smart Holder input

- AC input voltage: 100-240 Vac
- AC input frequency: 50/60 Hz
- AC input current: 110 mA-205 mA

Smart Holder output

9 Vdc +/- 5 % / 9 W (maximum load)

Power cable length

approximately 2 m

Compliance with standards

Conform to IEC 60 601-1, IEC 60 601-2, IEC 60601-2-24, IEC 60601-1-8, IEC 60601-1-11

Complies with the 93/42/EEC Medical Device Directive or the Medical Device Regulation (EU) 2017/745

Protection Index

Pump: IP35-Index of protection against solid foreign objects (> 2.5 mm) and water jets from any direction
Smart Holder Power: IP32-Index of protection against solid foreign objects (> 2.5 mm) and dripping liquids

Electrical compliance

Protection against leakage current: defibrillation-proof type CF
Protection against electric shocks: class II

Lights

Customization of screen brightness (10 levels)
Pumping LED activation from 1 sec. to 60 sec. frequency

Sound

Customization of sound level (3 levels), time between 2 alarms (from 3 sec. to 15 sec.), Key beep activation

Date & Time

Customization of clock and calendar: 12h or 24h format

Ambix nova administration set

Free-flow protection

All sets are designed with the Ambix nova clamp preventing the risk of free-flow when the door is opened and when the set is disengaged

Set length

Ambulatory set ~300 cm - article code: M46421820
Stationary set ~320 cm - article code: M46421910

Materials

Administration sets are made with PVC
 Not made with DEHP

Ambix nova accessories

Backpack for ambulatory use

- Child model
- Adult model
- Accessory trolley

Amika and Ambix nova Partner

Software for maintenance activities

Smart Holder Power

Pump Holder accessory with integrated AC/DC adapter for power supply only

Smart Holder COM

Pump Holder accessory with integrated AC/DC adapter for power supply, nurse call system and maintenance activities

It is mandatory to read the Instructions For Use before using this device. Ambix and Amika are registered trademarks by Fresenius Kabi in selected countries. Due to our policy of continuous product development as well as changes in standards, the features described are subject to change or not available in your country; please contact your sales representative for the most updated information. These medical devices are regulated by health authorities. Please refer to the respective CE Declaration of Conformity for the applicable Medical Device Directive or Regulation. Please contact your Fresenius Kabi representative for more details. Pictures are not contractual.



FRESENIUS KABI
caring for life

Fresenius Kabi AG
Else-Kröner-Str.1
61352 Bad Homburg
GERMANY
Phone: +49 (0) 6172 / 686-0
www.fresenius-kabi.com



DHF 09214 / CC 64223



FRESENIUS KABI
caring for life

Ambix nova

Ambulatory infusion pump





Simple & Safe

Ambix nova enables to launch an infusion in 3 clicks.



Install set



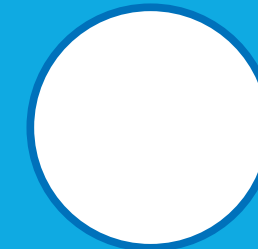
Program parameters



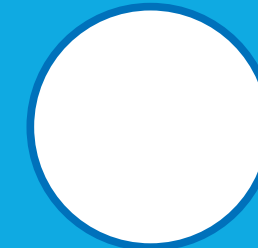
Start infusion



Ergonomic handle
Easy to operate



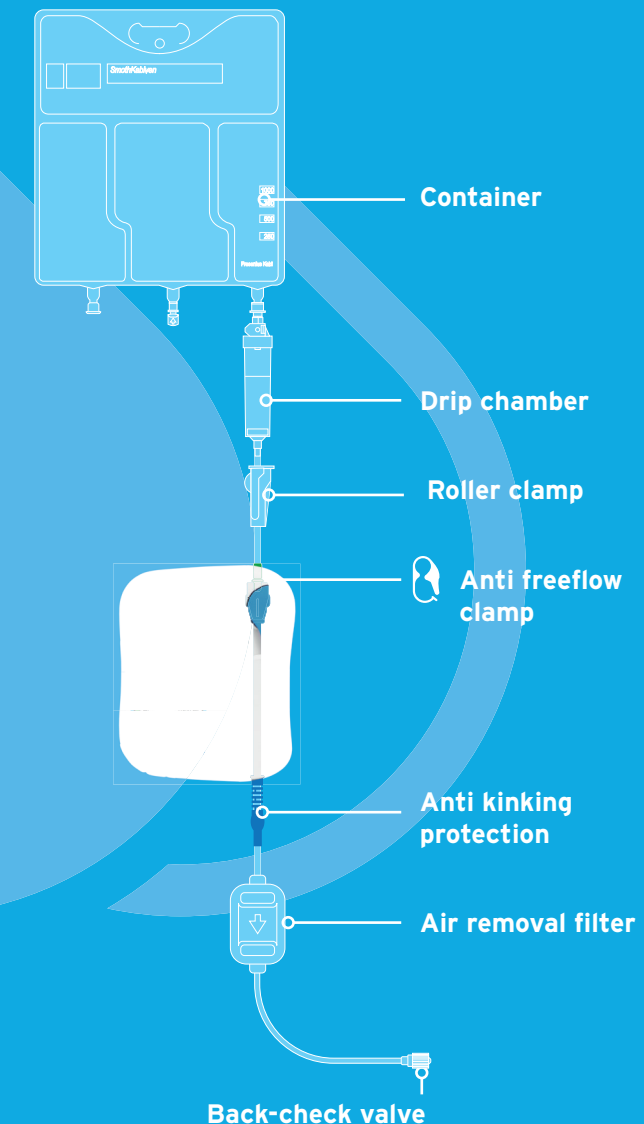
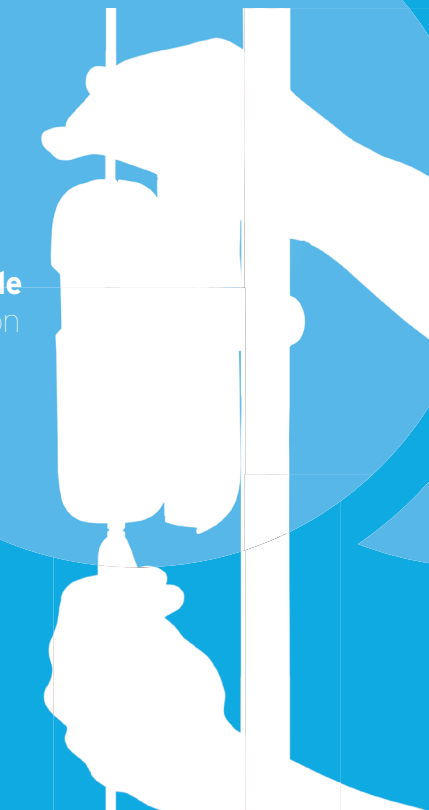
Wide colour screen
High visibility



Intuitive keypad
Immediate understanding

For parenteral nutrition, the complete solution from Fresenius Kabi.

Set colour code
Rapid installation



Ambix nova

Inspired by patients' lives

For safety and efficacy reasons infusion given in the home setting must be assisted by a pump.

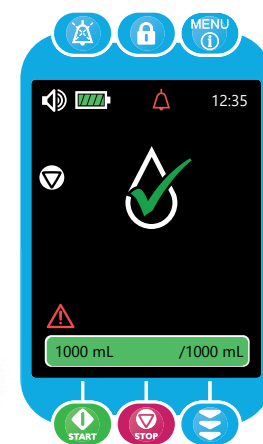
Ambix nova is the new generation of Fresenius Kabi ambulatory pumps.

Its unique design is inspired by patient's lives to make infusion simple and safe.



User friendly interface

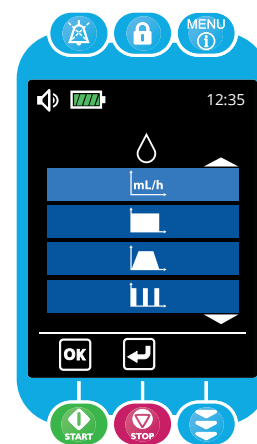
- Graphical symbols for an immediate understanding
- Monitoring screen to follow infusion status at a glance



Monitoring screen

Ready-to-infuse modes

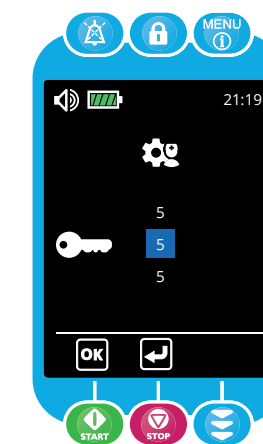
- Flow rate only
- Continuous
- Ramp
- Intermittent



Infusion modes

Safe infusion care

- Lockable keypad
- Ultrasonic air detection
- Anti-freeflow clamp
- Occlusion pressure sensor



Nurse lock

